



KS7700 Series

KEY FEATURES

- Fan-free terminal with embedded second generation Intel® Core™ i3 / i5 series processors
- 4GB of DDR3 RAM standard, 8GB maximum
- Touch screen options – resistive, infrared or precision-edge projective capacitive
- Patented fan-free design eliminates a key point of mechanical failure and particulate matter intake
- Die-cast aluminum alloy housing for maximum heat diffusion and durability
- Operates in a wide range of temperatures 14°F ~ 122°F (-10°C ~ 50°C)
- RAID 1 for data protection

Since 1984, Posiflex holds over 30 design patents for product innovation.



We provide best-of-breed hardware produced at two ISO 9001/9002/14001 certified manufacturing facilities, and partner with leading software and kiosk manufacturers.

Enhanced Power-Performers

The award winning KS7700 is the next evolution of hardened Point-of-Service – a 15-inch all-in-one fan-free touch screen terminal based on the second generation Intel® Core™ i3 / i5 series. The Posiflex KS7700's patented fan-free design assures maximum uptime, faster transactional processing, minimized maintenance, quiet operation and energy savings.

Like all Posiflex terminals, the KS7700 is stringently HALT and HASS tested by a third party for temperature cycling, vibration, drop, shock, static electricity and emission tolerances, to withstand the harshest environments. The Posiflex KS7700 is fully compatible with all current Posiflex peripherals and supported by a wide range of services.

About Posiflex

- Designer and manufacturer of Point-of-Service and industrial touch terminals
- Revolutionary technology, reliable quality, reasonable pricing and recognized service
- Delivers reliable terminals for maximum uptime and lower total cost of ownership
- Comprehensive suite of peripherals and services
- Innovative excellence since 1984 with more than 30 patents for innovation
- Global presence
- Two ISO 9001/9002/14001 Certified Facilities

Specifications

KS7700

Processor	Intel® Core™ i3-2330E 2.2GHz w/ 3MB L2 Cache Intel® Core™ i5-2510E 2.5GHz w/ 3MB L2 Cache
System Memory	DDR3 1066MHz SO-DIMM x 2 Slot (4GB Default)
Maximum Memory	8GB
Power Supply	12V DC Power Adaptor, 150W
Storage Device	2.5" SATA 160GB HDD or SSD Kit (Optional)
Supported OS	POSREADY 7 / Win XP Pro / Win 7 Pro / Linux ¹

Display

LCD	15" (1024x768) and 17" (1280x1024) LCD Panel
Touch Function	Projected Capacitive, 5-Wire Resistive, IR Touch
Brightness Control	Digital Push Button
Tilt Adjustment	From 15° to 70°

Dimensions

Dimensions (WxDxH)	Standard Base Mount: 14.88" x 12.28" x 14.61" Optional Base Mount: 14.88" x 12.28" x 13.38" Wall Mount: 14.88" x 3" x 11.9"
Weight (Pounds)	Standard Base Mount: 24 lbs (Includes power adaptor) Optional Base Mount: 20 lbs Wall Mount: 13 lbs

Connectivity

LAN Port	1 x RJ-45 10/100/1000 Base-T Ethernet
Serial Port	3 x 9-pin Male d-sub, 1 x RJ-50 (5V/12V Support on COM1/COM2/COM3/COM4)
VGA Port	1 x 15-pin Female d-sub RGB Analog (12V Support for Posiflex LCD Monitors)
CR Port	1 x RJ-11 Port Controls 2 Cash Drawers
Standard USB	7 x USB 2.0 Type A Port, (6 x on I/O Panel, 1 x in Side Cover)
Parallel Port	Optional, with Cable P/N 21862033420
RAID 1	Optional, Requires Secondary Storage Device to work
Backup Battery	Optional
AUDIO Line Out	Yes



Cash Drawer



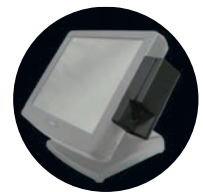
Rear Mount
Display



Thermal
Printer



Secondary
Rear Monitor



MSR and
Fingerprint Reader



More Ports for Increased Functionality



Posiflex designs, engineers and manufactures:

Touch Screen Terminals | **Printers** | **Magnetic Stripe Readers** | **Cash Drawers** | **Rear/Pole Displays**

A full range of services includes:

Extended Warranty | **Onsite Installation** | **Advance Exchange** | **Installation** | **Professional Services**

Posiflex Business Machines, Inc.

30689 Huntwood Ave.

Hayward, CA 94544

P: 888-968-1668

F: 510-475-0982

sales.department@posiflexusa.com