



NetVanta[®] 344

Business-class ADSL/ADSL2/ADSL2+ Router with 4-port Switch

Product Features

- Affordable routing solutions for business-class ADSL networks
- Integral 4-port managed Ethernet switch
- Innovative ADSL2+ technology provides further reach and higher bandwidth (up to 25 Mbps)
- Standards-based routing/switching protocols, based on the widely deployed NetVanta Series
- Feature-rich ADTRAN Operating System (AOS)
- Stateful inspection firewall for network security
- Optional VPN for secure corporate connectivity across the Internet
- Industry-leading five-year North American warranty
- Recognizable Command Line Interface (CLI) eliminates re-training
- User-friendly web Graphical User Interface (GUI)
- NAT-compatible SIP ALG for VoIP
- Interoperable with other NetVanta product offerings and carrier-based ADSL service offerings

The NetVanta 344 is a business-class ADSL/ADSL2/ADSL2+ IP access router with an integral four-port Ethernet switch. It provides a single ADSL network interface and four auto-sensing 10/100Base-T Ethernet interfaces. This product is ideal for carrier bundled service offerings and enterprise Internet access for secure, high-speed corporate connectivity. In addition to supporting ADSL (Annex A), and ADSL2, the NetVanta 344 supports today's most advanced ADSL technology, ADSL2+, for applications taking advantage of its greater reach and higher bandwidth, up to 25Mbps. A variety of WAN protocols are supported including PPP over ATM and PPPoE over ATM.

Standards Protocols

The versatile hardware platform of the NetVanta 344 is further complemented with the ADTRAN[®] Operating System (AOS). The AOS allows for the support of standards-based switching, VLAN tagging, static and default routes, demand routing, and allows for fast, accurate network convergence using routing protocols such as BGP, OSPF, and RIP.

Security

The AOS provides a powerful, high performance stateful inspection firewall. It will examine all incoming and outgoing packets against the security policies established by the IT manager. In addition, the firewall can identify and protect against common Denial of Service (DoS) attacks like TCP syn flooding, IP spoofing, ICMP redirect, ping-of-death, and IP reassembly problems.

With the ADTRAN OS Enhanced Feature Pack Upgrade, the NetVanta 344 supports up to five simultaneous IPSec VPN tunnels, and encryption algorithms like DES, 3DES, and AES. With this upgrade, the NetVanta 344 is fully compatible with ADTRAN's IPSec VPN equipped NetVanta products: Ethernet switches, access routers, and VPN/firewall appliances.

Quality of Service (QoS)

QoS is also supported for delay sensitive traffic like VoIP or video. To prioritize mission critical traffic and control network congestion, the NetVanta 344 uses Low Latency Queuing, Weighted Fair Queuing (WFQ), Class-based WFQ, and DiffServ marking to establish priority of IP packets routed over the WAN.

VoIP Ready

In combination with the QoS features, a specialized SIP Application Layer Gateway (ALG) allows SIP traffic to traverse NAT-enabled firewalls. For an enterprise network, this interoperability allows IP PBXs, phones, and other SIP-based devices to set up, tear down, and pass voice and call control messages seamlessly through the integral NAT-enabled firewall.

Administration

The AOS offers a standard Command Line Interface (CLI) that mimics the widely adopted, industry *de facto* standard. The sequence of commands to configure similar devices is almost identical, virtually eliminating training costs associated with re-learning a new operating system or costly industry certifications. The CLI also allows for configuration scripts to be used, saved, and downloaded for a quick and easy recovery mechanism. In addition, an intuitive web-based GUI provides step-by-step configuration wizards, management capability, and the ability to upload firmware updates.

ADTRAN, the leader in WAN connectivity, offers proven and dependable equipment that will increase your network performance, lower costs and allow migration to next generation technologies. The NetVanta 344 is no exception.





ADTRAN, Inc.

Attn: Enterprise Networks
901 Explorer Boulevard
Huntsville, AL 35806

P.O. Box 140000
Huntsville, AL 35814-4000

256 963-8000 voice
256 963-8699 fax
256 963-8200 fax back

General Information
800 9ADTRAN
info@adtran.com
www.adtran.com

Pre-Sales

Technical Support

800 615-1176 toll-free
application.engineer@adtran.com
www.adtran.com/support

Where to Buy

877 280-8416 toll-free
channel.sales@adtran.com
www.adtran.com/where2buy

**Post-Sales
Technical Support**

888 423-8726
support@adtran.com
www.adtran.com/support

**ACES Installation &
Maintenance Service**

888 874-ACES
aces@adtran.com
www.adtran.com/support

International Inquiries

256 963 8000 voice
256 963-6300 fax
international@adtran.com
www.adtran.com/international

**For the regional office
nearest you, visit:**

www.adtran.com/regional



ADTRAN is an ISO 9001, ISO 14001,
and a TL 9000 certified supplier.

61200426L1-8D 11.1 December 2005
Copyright © 2005 ADTRAN, Inc.
All rights reserved.

NetVanta® 344

Business-class ADSL/ADSL2/ADSL2+ Router with 4-port Switch

Physical Interface

- **DSL:** ADSL/ADSL2/ADSL2+ Interface
ADSL ITU G.992.1 (Annex A)
ADSL ITU G.992.2 (Annex A) G.Lite
Extended Reach ADSL (RADSL)
ADSL2 ITU G.992.3 (Annex A)
ADSL2+ ITU G.992.5 (Annex A)
- **Ethernet:** Four-port, Auto-sensing Ethernet Switch
10/100Base-T Full Duplex (RJ-45)

Diagnostics LEDs

- Power
- Ethernet
- DSL
- Internet

Memory

- **RAM:** 32 MB
- **FLASH:** 16 MB

Routing

- eBGP/iBGP
- OSPF
- RIP (v1 and v2)
- Demand Routing
- GRE
- IGMP v2
- PPP over ATM (RFC 2364)
- PPPoE over ATM (RFC 2516)
- Classical IP over ATM (RFC 2225)
- AAL5
- PAP and CHAP

Quality of Service

- **DSL:** Low Latency, Weighted Fair Queuing (WFQ),
and Class-based WFQ
- **Ethernet:** Weighted Round Robin (WRR) and
Strict Priority Queuing
- DiffServ Packet Marking and Recognition
- Frame Relay Fragmentation

Switching

- VLAN Support (802.1Q)
- Spanning Tree (802.1D)
- Rapid Spanning Tree (802.1w)
- 802.1p and DiffServ QoS

Administration

- Familiar Command Line Interface (CLI)
- Web-based GUI
- n-Command™ support
- SNMP v2
- SYSLOG Logging
- Email Alerts (SMTP)
- Policy Statistics

DHCP

- Client, Server, and Relay

Security

Firewall

- Stateful Inspection Firewall
- Denial of Service (DoS) Protection
- Access Control Lists
- Application Level Gateways (ALGs)

Network Address Translation

- Basic NAT (1:1), NATP (Many:1), and Port Translation
- NAT compatible SIP ALG

Secure Management

- Multi-level access control
- TACACS+
- RADIUS AAA
- SSH CLI and SSL GUI

Optional Virtual Private Network (VPN)

- **IPSec Mode:** Tunnel
- **Encryption:** DES, 3DES, and AES
- **Diffie Hellman Group Support:** Group 1: MODP 768
and Group 2: MODP 1024
- **Hash Algorithms:** MD5-HMAC and SHA1-HMAC
- **Authentication Mechanisms:** XAUTH, Digital
certificates, Preshared keys, and Secure ID
- **Key Management:** IKE (ISAKMP/Oakley)
- **IKE Modes:** Main and Aggressive
- Dead Peer Detection
- NAT Traversal V2

Environment

- **Operating Temperature:** 0° to 50 °C (32° to 122 °F)
- **Storage Temperature:** -20° to 70 °C (-4° to 158 °F)
- **Relative Humidity:** Up to 95%, non-condensing

Physical

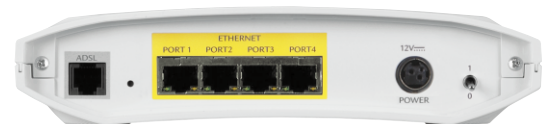
- **Chassis:** Self-standing, plastic enclosure
- **Dimensions:** 1.625" H, 7.5" W, 5.25" D
- **Weight:** 1 lb.
- **Power:** 12 VDC, 800 mA, 6 W
(AC to DC Power Adapter Included)

Agency Approvals

- FCC Part 68
- Industry Canada CS03
- CE Mark, UL & Canadian UL (CUL), IEC/EN, CSA

Ordering Information

Equipment	Part #
Systems	
NetVanta 344 Chassis	1200426L1
Systems with VPN	
NetVanta 344 with VPN	4200426L2
VPN Software Upgrade	
NetVanta 344 VPN Software Upgrade	1950426L2



Specifications subject to change without notice. ADTRAN and NetVanta are registered trademarks of ADTRAN, Inc. All registered trademarks and trademarks mentioned in this publication are the property of their respective owners.