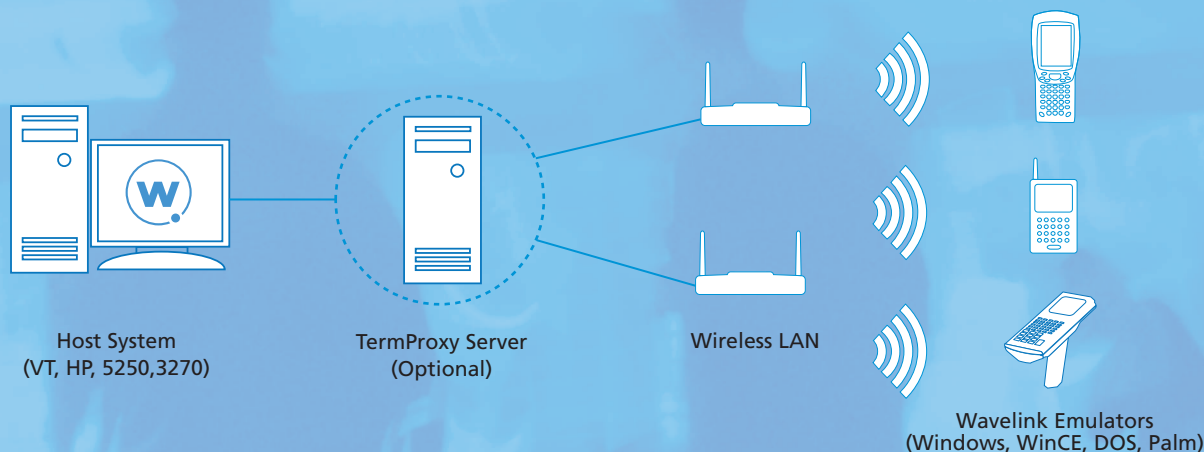


## Mobilize Your Business Efficiently and Confidently

If your business today relies on mission-critical applications resident on mainframe systems, your challenge becomes how to easily and reliably extend these applications to your mobile workers to gain the advantage of automation, productivity and efficiency. Overcome these challenges with Wavelink, proven software for extending and managing your most important business applications.

Wavelink Emulation software provides the most comprehensive solution for accessing and managing connections to applications resident on host systems using 5250, 3270, VT and HP emulation. Wavelink Emulators enhance the productivity of your mobile workforce and IT staff, and the applications and devices they use. With Wavelink, you can spend less time supporting, and more time improving, your business.



### Boost the Productivity of Your Mobile Workers

Wavelink Emulators help your system and people work smarter by providing for intelligent data collection and communications functions. For example, Wavelink Emulators help you prevent errors and inefficiencies caused by incorrect data entry or scans, take advantage of easy on-screen navigation, and maximize the uptime of your workforce by avoiding dropped connections. Wavelink Emulators also allows your IT staff to get detailed control over various functions from scanning, to users' access to applications, and interactions with the host, such as directed messages and error notices.

### Minimize Support & Administration Costs (TCO) with Integrated Management

Relieve the burden of supporting your software and mobile devices. Wavelink Emulators come tightly integrated with the ability to be remotely configured, secured, managed and updated - all from a central management console. Using Wavelink Avalanche with your Emulators, you can seamlessly revise device configurations, synchronize software

and update firmware and drivers. To monitor and manage your installed base of mobile devices and applications, Wavelink Avalanche also provides real-time visibility into their status. It also helps you keep track of all managed assets and even lets you export asset data to reporting applications.

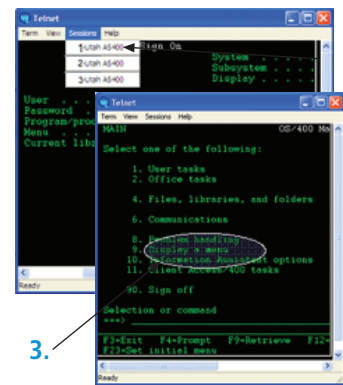
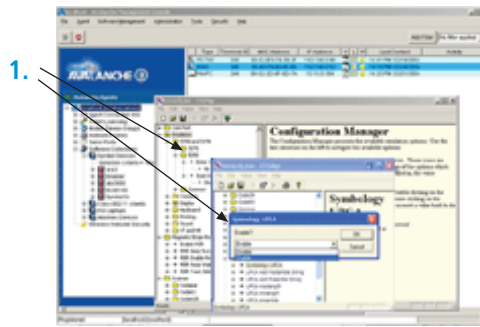
### Gain Flexibility to Support Mixed Hardware and Emulation Environments

Wavelink Emulators provide you with flexibility and investment protection by supporting the broadest range of mobile devices and emulation types available. With Wavelink Emulators, you can preserve your existing infrastructure, while migrating to newer devices and technologies. For example, you can run emulation based applications consistently across your DOS/legacy units and Windows-based devices, providing for a seamless user experience as well as the lowest cost of support and training. Wavelink Emulators give you flexibility to utilize the most popular emulation types including 5250, 3270, VT100, VT110, VT220, VT320 and HP. They also allow you to take advantage of running multiple emulation sessions concurrently (i.e. 5250 and VT), from the same device.

# EMULATORS

Wavelink Emulators provide users with a smart interface, increased productivity, and centralized control for accessing and managing applications within a 5250, 3270, VT or HP emulation environment.

1. Centrally configure, deploy and update your emulation software across all your devices, with detailed control over emulation parameters, such as Symbology type.
2. Easily switch between multiple emulation sessions.
3. Use touch screen and stylus taps for easy and efficient navigation on Windows based devices.



## KEY FEATURE

## CAPABILITIES & BENEFITS

Plug and Play	Efficiently connect to your host systems without having to make changes to existing applications. Setting up emulation parameters, keyboard mapping and host connection profiles can be done directly through a device-side administrator or remotely using an integrated central management console.
Multiple Emulation Types	Wavelink Emulators provide rich support for all of the popular emulation types including 5250, 3270, VT100, VT110, VT220, VT320 and HP.
Multiple Concurrent Sessions	Take advantage of running multiple emulation sessions at the same time (i.e. 5250 and VT) and easily navigate between them, all from the same device.
Connection Persistence	Increase productivity by avoiding dropped connections between devices and the host system, using the Wavelink TermProxy as part of your Emulation solution. Devices can freely roam in and out of coverage while maintaining application state and seamless re-connections to the host.
Support for Legacy and New Devices	Preserve your existing infrastructure, while having the flexibility to migrate to newer devices and technologies. For example, DOS/legacy units can co-exist with Windows-based devices for a seamless user experience.
Centralized Management	Configure and update software and configurations on remote devices from a central console, lowering your support costs. Using the integrated Wavelink Avalanche solution, you also get complete visibility and control over mobile devices. ActiveSync, HotSync, Symbol AirBeam, and LWP are also supported for deployment.
Easy to Use Navigation	Make your mobile workers work more productively with smart user interface features such as Windows-based touch screen hotspots, tiling of displays, display locking, key mapping, keyboard macros, and more.
Advanced Administration	Allow your users and IT staff to operate more efficiently, including the ability to: configure error messages from the host as highlighted overlays; automatically send data after the last scan; and send blocks of data more efficiently.

Advanced Scanning Integration	Take advantage of tight integration with key scanning functions to maximize data collection productivity. Automatically strip, append, or replace scan data based on length, size, data type; prevent scanning errors using data field identifiers and "scan only" field support; perform automatic scanning using host initiated commands; and more.
-------------------------------	---

## Ensure Reliability and Support From the Proven Leader

Wavelink Emulators are used by the world's leading organizations, by 10 of the top 12 North American retailers, and by thousands of customers worldwide. Wavelink has more than a decade of expertise and reliability that you can count on. Wavelink Emulators are also backed up with our expert technical support through our software maintenance plans that provide you with investment protection and peace of mind.

## Devices Supported

Below are the devices currently supported by Wavelink's Emulation products. Please contact your Wavelink representative or reseller for new device support.

## SYMBOL TECHNOLOGIES

- Symbol PDT 9046
- Symbol PDT 8846
- Symbol PDT 8146
- Symbol VRC 8900
- Symbol PDT 8000
- Symbol PDT 7900
- Symbol PDT 7500
- Symbol PDT 7200
- Symbol VRC 6900
- Symbol PDT 6800
- Symbol PDT 6100
- Symbol VRC 4000
- Symbol PPT 2800
- Symbol SPT 2700

- Symbol MK2000
- Symbol WSS 1000
- Symbol Telxon 960SL

## INTERMEC TECHNOLOGIES

- Intermec CK30
- Intermec 700 SERIES

## FUJITSU CORPORATION

- Fujitsu iPad



11332 NE 122nd Way, Suite 300 Kirkland, WA 98034 USA  
 Sales and Support: 1-888-697-WAVE (9283)  
 International: +1-425-823-0111 UK/EMEA: +44 1189 572 047  
**WWW.WAVELINK.COM**