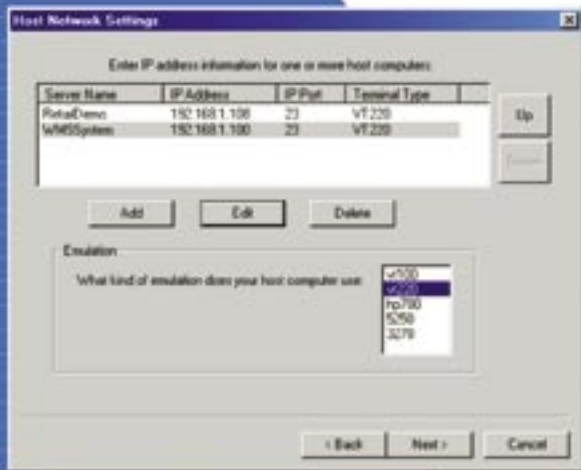


# PowerNet Twin Client™

Terminal Emulation Solution



Configuration Wizard

## Features

- VT100/220 terminal emulation
- IBM 3270/5250 terminal emulation
- HP700/92 terminal emulation
- Sub-second response times
- Rich feature set
- Log and trace functions
- Portable printer support
- Host connection via Telnet and TCP/IP
- Over-the-Air Application and Configuration File Distribution (optional feature)
- Screen formatting in the portable (optional feature)

## Terminal Emulation Software for Falcon® RF Terminals

PowerNet Twin Client provides VT100, VT220, HP700/92, IBM 3270, and IBM 5250 terminal emulation for PSC's complete line of Falcon® data terminals.

## Sub-Second Response Times

PowerNet Twin Client, running on a Falcon® RF terminal, can reformat screens for a Falcon® display and typically achieve sub-second response times in data collection applications—without the need for a wireless network controller.

## Rich Wireless Terminal Control Feature Set

PowerNet Twin Client was designed specifically for wireless terminals. Unlike off-the-shelf terminal emulation programs for PCs, PowerNet is loaded with features that allow the system integrator or administrator to tailor the terminal functionality for specific real-time data collection applications.

## Twin Client Manager

The PowerNet Twin Client Manager for Microsoft® Windows® includes a wizard interface to help an administrator efficiently configure a large number of portable data terminals. The wizard creates a template that can define multiple host servers, terminal emulation type, and RF radio settings.

The Twin Client Manager also provides visual tools to perform screen and keyboard mapping, as well as the capability to modify your scanning and printing configuration.

## Fast and Easy Deployments

The PowerNet AirLoader is a tool to distribute PowerNet Twin Client application and configuration files to terminals running the PowerNet Twin Client terminal emulator. This is an optional feature for the standard PowerNet Twin Client terminal emulator.

## Screen Formatting in the Terminal

The PowerNet Twin Client features an optional screen formatter that allows the data terminal to properly resize and display a 24 x 80 column terminal screen on a smaller terminal screen. The screen formatting takes place on the terminal, eliminating the need for a network controller. This is an optional feature for the standard PowerNet Twin Client terminal emulator.



# Specifications

## PowerNet Twin Client

### Log and Trace

PowerNet Twin Client is able to maintain a log file capturing all aspects of PowerNet Twin Client communication, enabling support personnel to follow data from the host system to the remote terminal and back again. The log file helps tune the system during setup, and can be used for problem resolution if any problems appear.

### Printer Support

With PowerNet Twin Client, you can attach a portable printer to your Falcon®'s RS-232 port. PowerNet Twin Client supports most available portable printers, including models from Monarch, TEC, and Zebra/Comtec. PowerNet Twin Client also has IrDA printing support for the PSC Falcon® 33x and 34x.

### Industry Standard Telnet Protocol Access to TCP/IP Hosts

PowerNet Twin Client enables you to connect easily to a variety of host systems using Telnet and TCP/IP protocols. Just set the host and client IP addresses, and you're ready to communicate via any of the leading 2.4GHz spread spectrum wireless LAN solutions, including Cisco Aironet, Lucent/Proxim Orinoco, and Symbol. You can be up and running in minutes. It's that simple!

### Bundles Available with Falcon® Terminals

For your convenience, PowerNet Twin Client is available pre-loaded and preauthorized on any PSC Falcon® (excluding Falcon 4620).

### Network Addressing

- IP Address
- TCP/IP

### Scanner Control

- Scan termination key
- Scan ahead
- Scanner type
- Input field length check
- Input field length truncation
- Trailing data stripping
- Scanner data mapping
- Bar code ID character
- Real-time decoder control
- Static decoder control
- Scan editing
- Binary scan data
- Modulus-10 check digit
- Redundancy

### Keyboard Control

- Keyboard mapping
- Keyboard macros
- Session end key
- Auto send key
- Key click
- Case conversion

### Display Control

- Character set mapping
- Quadrant mode
- Scrolling mode
- Backlighting
- Cursor format
- Field blocking
- Blink mask
- Reverse video
- Double high
- Double wide
- Row relocation

### Audible Alarm Control

- Volume
- Duration
- Frequency
- Count control

### Printer Control

- Printer type selection
- Initialization

### Diagnostic Options

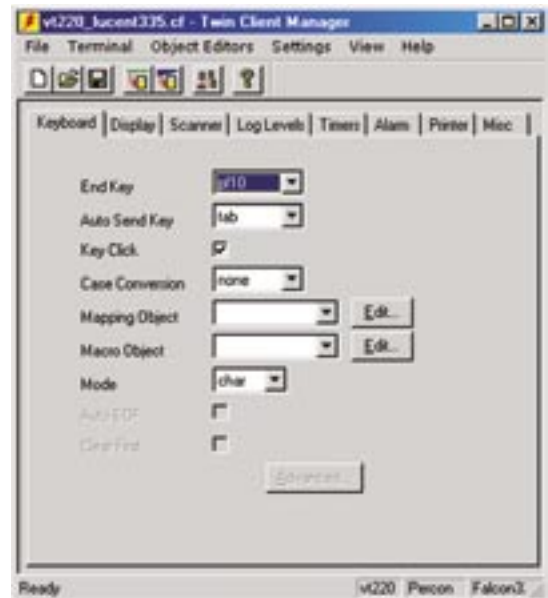
- Log lines
- General debug level
- Display routine debug level
- Dialog debug level

### Terminal Emulations

- VT100
- VT220
- HP700/92
- IBM 3270
- IBM 5250

### Supported Data Terminals

- Falcon® 315, 325, 335, and 345
- Falcon® 515
- Falcon® 625 and 665
- Falcon® 4210
- Falcon® 4410 and 4420
- Falcon® 4620



Keyboard Configuration Tab

### PSC Inc.

959 Terry Street  
Eugene OR 97402-9150 USA  
Tel: 800 695 5700 or 541 683 5700  
Fax: 541 345 7140

### Specifications are subject to change without notice.

Additional information concerning this product or other PSC products and services can be found at the PSC web site: [www.pscnet.com](http://www.pscnet.com), or contact your PSC representative for more information.



### PSC Worldwide Sales and Service locations

**Australia - NSW**  
Tel: 61 2 9878 8999  
Fax: 61 2 9878 8688

**Belgium**  
Tel: 32 2 414 74 09  
Fax: 32 2 410 11 63

**Brazil**  
Tel: 55 11 5507 7721  
Fax: 55 11 5507 7696

**Chile**  
Tel: 562-339-7000  
Fax: 562-339-7985

**China**  
Tel: 86 10 6857 9048  
Fax: 86 10 6857 8699

**France**  
Tel: 33 1 64 86 71 00  
Fax: 33 1 64 46 72 44

**Germany**  
Tel: 49 6151 93580  
Fax: 49 6151 935897

**Hong Kong**  
Tel: 852 25846210  
Fax: 852 25210291

**India**  
Tel: 91 11 24621586  
Fax: 91 11 24641662

**Italy**  
Tel: 39 039 629031  
Fax: 39 039 6859496

**Japan**  
Tel: 81 3 3491 6761  
Fax: 81 3 3491 6656

**Latin America**  
Tel: 1 305 539 0111  
Fax: 1 305 539 0206

**Singapore**  
Tel: 65 6435 1311  
Fax: 65 6226 1242

**Spain**  
Tel: 34 91 746 28 60  
Fax: 34 91 742 35 33

**Sweden**  
Tel: 46 4010 84 92  
Fax: 46 4010 84 91

**United Kingdom**  
Tel: 44 1925 809500  
Fax: 44 1925 809505