

**Industrial PCs applied in**

- / Logistics and Warehouse
- / Heavy Duty
- / Fleet Management
- / Stationary and Automation



## **Mounting Solutions for DLT-V83 Industrial PCs Catalog V1.20**

The software and hardware designations as well as the brand names used in this catalog are in most cases also registered trademarks and are subject to the international law (trademark, brand and protection laws).

We recognize all national and international trademarks and product names.

We reserve the right to modify the contents of this catalog at any time and without prior notice.

DLoG GmbH assumes no liability for technical inaccuracies, typographic errors or faults in this catalog.

DLoG GmbH also assumes no liability for damages caused directly or indirectly by the delivery, performance or usage of this material.

This catalog is protected by copyright. Duplication, in whole or in part, is not permitted without prior written approval of DLoG GmbH.

Title:	Mounting Solutions DLT-V83 Series Industrial PCs
Completed on:	Nov 20, 2014
Version:	V1.20

© Copyright 2013-2014

By DLoG GmbH

Industriestraße 15

D-82110 Germering

All rights reserved

Phone: (+49) 89 / 41 11 91 0

Mail: [info@dlog.com](mailto:info@dlog.com)

Internet: [www.advantech-dlog.com](http://www.advantech-dlog.com)

# Content

<b>1.</b>	<b>Operation Classes 5M3, 5M2 and 5M1 .....</b>	<b>4</b>
<b>2.</b>	<b>DLT-V8310 .....</b>	<b>5</b>
2.1.	<b>Mounting Brackets / Adapters .....</b>	<b>5</b>
2.1.1.	Mounting Bracket for DLT-V8310.....	5
2.1.2.	Adapter for Reusing MPC 6/10 Mobile Mounting Bracket for DLT-V8310.....	6
2.1.3.	Adapter for Reusing MPC 6/10 Stationary Mounting Bracket for DLT-V8310 .....	6
2.1.4.	Clamp mount small for DLT-V8310.....	7
2.1.5.	Clamp mount maxi for DLT-V8310.....	7
2.1.6.	Clamp mount adapter low for DLT-V8310.....	8
2.1.7.	Clamp mount adapter high for DLT-V8310 .....	8
2.2.	<b>RAM-Mount.....</b>	<b>9</b>
2.2.1.	RAM-Mount Set Short, Ball 2.25" for DLT-V8310 .....	9
2.2.2.	RAM-Mount Set Long, Ball 2.25" for DLT-V8310.....	9
2.2.3.	RAM-Mount Set Long, Double Arm, Ball 1.5" for DLT-V8310.....	10
2.2.4.	RAM-Mount Set Long, Double Arm, Ball 1.5", Tube Mounting for DLT-V8310 .....	10
<b>3.</b>	<b>DLT-V8312 .....</b>	<b>11</b>
3.1.	<b>Mounting Brackets / Adapters .....</b>	<b>11</b>
3.1.1.	Mounting Bracket for DLT-V8312.....	11
3.1.2.	Adapter for Reusing MPC 6/12 Mobile Mounting Bracket for DLT-V8312.....	12
3.1.3.	Adapter for Reusing MPC 6/12 Stationary Mounting Bracket for DLT-V8312 .....	12
3.1.4.	Clamp mount small for DLT-V8312.....	13
3.1.5.	Clamp mount maxi for DLT-V8312.....	13
3.1.6.	Clamp mount adapter low for DLT-V8312.....	14
3.1.7.	Clamp mount adapter high for DLT-V8312 .....	14
3.2.	<b>RAM-Mount.....</b>	<b>15</b>
3.2.1.	RAM-Mount Set Short, Ball 2.25" for DLT-V8312 .....	15
3.2.2.	RAM-Mount Set Long, Ball 2.25" for DLT-V8312.....	15
3.2.3.	RAM-Mount Set Long, Double Arm, Ball 1.5" for DLT-V8312.....	16
3.2.4.	RAM-Mount Set Long, Double Arm, Ball 1.5", Tube Mounting for DLT-V8312 .....	16
<b>4.</b>	<b>DLT-V8315 .....</b>	<b>17</b>
4.1.	<b>Mounting Brackets / Adapters .....</b>	<b>17</b>
4.1.1.	Mounting Bracket for DLT-V8315.....	17
4.1.2.	Adapter for Reusing MPC 6/15 Mobile Mounting Bracket for DLT-V8315.....	18
4.1.3.	Adapter for Reusing MPC 6/15 Stationary Mounting Bracket for DLT-V8315 .....	18
4.1.4.	Clamp mount small for DLT-V8315.....	19
4.1.5.	Clamp mount maxi for DLT-V8315.....	19
4.1.6.	Clamp mount adapter low for DLT-V8315.....	20
4.1.7.	Clamp mount adapter high for DLT-V8315 .....	20
4.2.	<b>RAM-Mount.....</b>	<b>21</b>
4.2.1.	RAM-Mount Set Short, Ball 2.25" for DLT-V8315 .....	21
4.2.2.	RAM-Mount Set Long, Ball 2.25" for DLT-V8315.....	21

# 1. Operation Classes 5M3, 5M2 and 5M1

This catalog shows the mounting solutions for the DLT-V83 Industrial PCs.

It specifies whether the listed mounting solutions are suitable for mobile use, restricted mobile use or stationary use.

These uses correspond to the operation classes 5M3, 5M2 and 5M1 for mechanical environmental conditions.

The following standards offer a practical means of reference:

- DIN EN 60721-3-5: 1998 classification of environmental conditions, part 3, section 5: Use on and in ground vehicles.
- Military standard MIL-STD 810F: 2000.

## **5M3: Mobile use**

Operational environments with **high** energy vibrations and **high** energy shocks as well as **rough** handling/transport compliant with:

- Operation class **5M3** according to DIN EN 60721-3-5 or equivalent.
- Category **US Highway Truck** according to MIL-STD 810F.
- Examples: Vehicles without shock absorption: Forklifts, unbalanced machines: Combustion engine of a construction machine.

## **5M2: Restricted mobile use**

Operational environments with **low** energy vibrations and **high** energy shocks as well as **careful** handling/transport compliant with:

- Operation class **5M2** according to DIN EN 60721-3-5 or equivalent.
- Category **US Highway Truck** according to MIL-STD 810F.
- Examples: Vehicles with shock absorption: Driver's cab in a tractor, standing machines: Machine tools.

## **5M1: Stationary use**

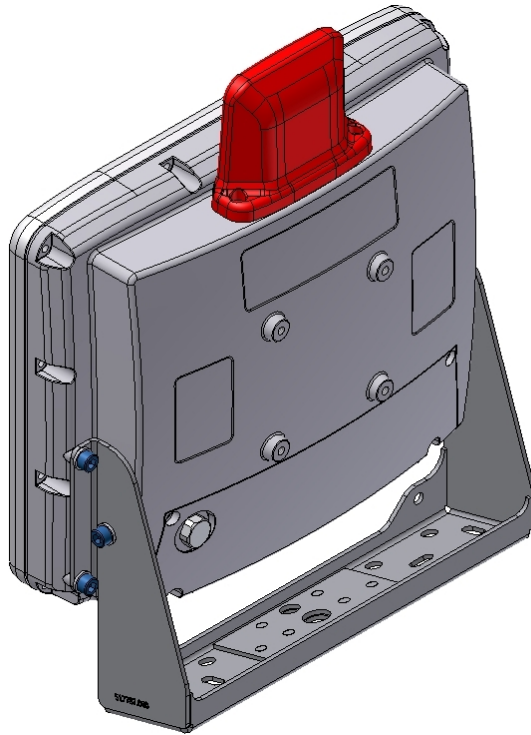
Operational environments with **low** energy vibrations and **medium** energy shocks as well as **very careful** handling/transport compliant with:

- Operation class **5M1** according to DIN EN 60721-3-5.
- Examples: Vehicles with very good shock absorption: Car dashboard, immobile mounting surfaces: Desk or wall.

## 2. DLT-V8310

### 2.1. Mounting Brackets / Adapters

#### 2.1.1. Mounting Bracket for DLT-V8310

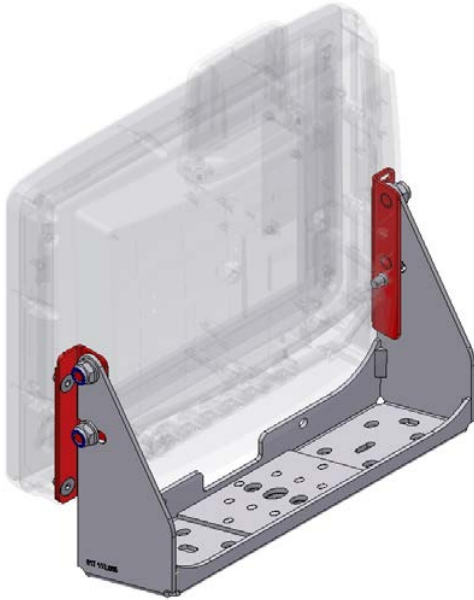


Order number: DL-MEMT79375000

Technical data:

- Includes screw set (Terminal-side)
- Suitable for mobile use according to class 5M3

### 2.1.2. Adapter for Reusing MPC 6/10 Mobile Mounting Bracket for DLT-V8310



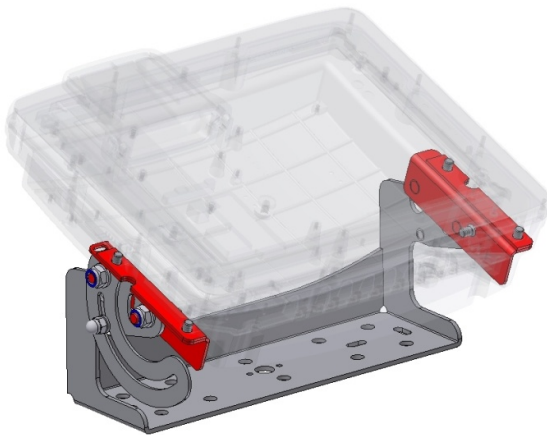
Order number: DL-MEMS79375800

Adapter set for reusing the mobile mounting bracket of the predecessor terminal MPC 6/10.

Technical data:

- Includes screw set (Terminal-side)
- Suitable for mobile use according to class 5M3

### 2.1.3. Adapter for Reusing MPC 6/10 Stationary Mounting Bracket for DLT-V8310



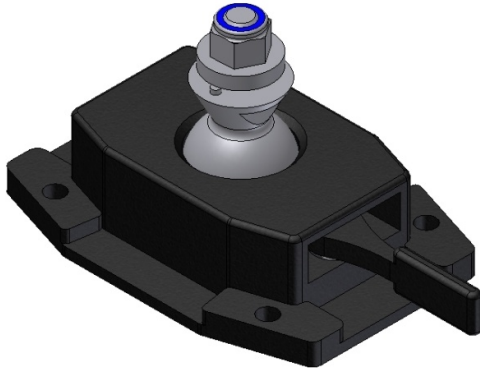
Order number: DL-MEMS79375900

Adapter set for reusing the stationary mounting bracket of the predecessor terminal MPC 6/10.

Technical data:

- Includes screw set (Terminal-side)
- Suitable for stationary use according to 5M1

**2.1.4. Clamp mount small for DLT-V8310**

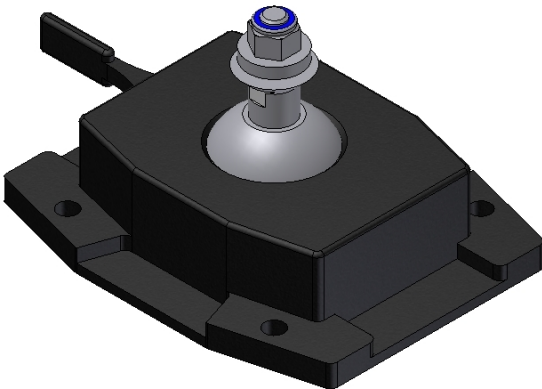


Order number: DL-CMECF51029001

Technical data:

- Includes screw set (Terminal-side)
- Suitable for mobile use according to class 5M3

**2.1.5. Clamp mount maxi for DLT-V8310**



Order number: DL-CMECF51029100

Technical data:

- Includes screw set (Terminal-side)
- Suitable for mobile use according to class 5M3

**2.1.6. Clamp mount adapter low for DLT-V8310**



Order number: DL-MEMT70123500

Technical data:

- Includes screw set (Terminal-side)
- Suitable for mobile use according to class 5M3

**2.1.7. Clamp mount adapter high for DLT-V8310**



Order number: DL-CMEMT70123400

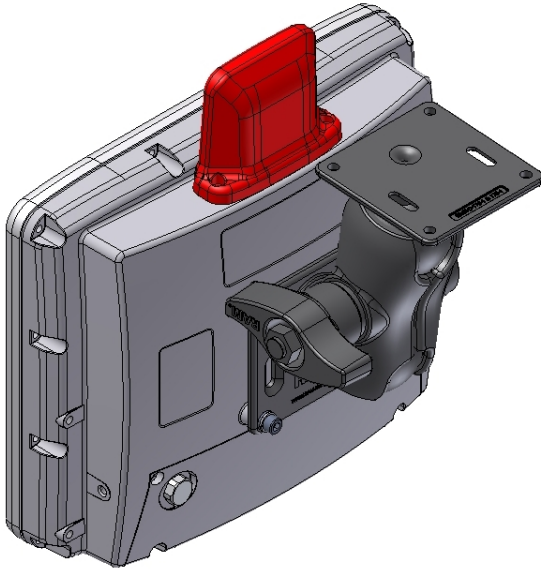
Technical data:

- Includes screw set (Terminal-side)
- Suitable for mobile use according to class 5M3



## 2.2. RAM-Mount

### 2.2.1. RAM-Mount Set Short, Ball 2.25" for DLT-V8310

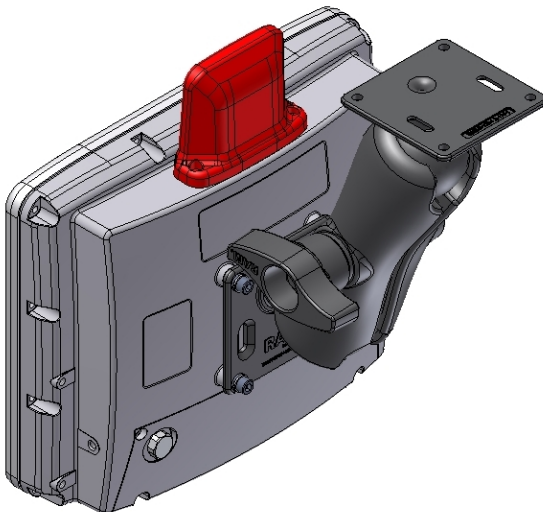


Order number: DL-CMENT70129800

Technical data:

- Includes screw set (Terminal-side)
- Ball 2.25" (with plate)
- 1 arm
- Arm length 130 mm
- Suitable for mobile use according to class 5M3

### 2.2.2. RAM-Mount Set Long, Ball 2.25" for DLT-V8310

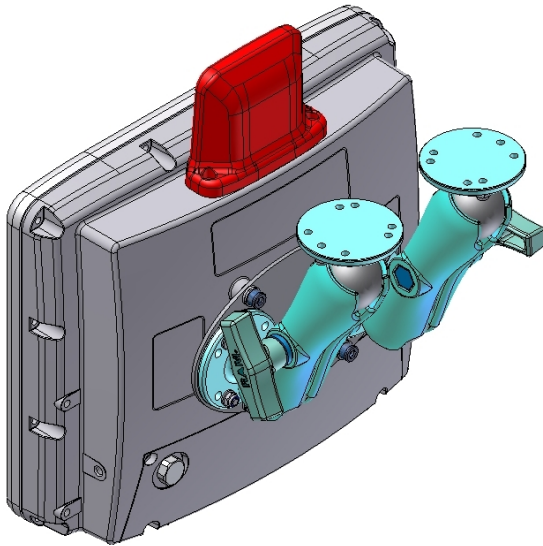


Order number: DL-CMENT70129700

Technical data:

- Includes screw set (Terminal-side)
- Ball 2.25" (with plate)
- 1 arm
- Arm length 215 mm
- Suitable for mobile use according to class 5M3

### 2.2.3. RAM-Mount Set Long, Double Arm, Ball 1.5" for DLT-V8310

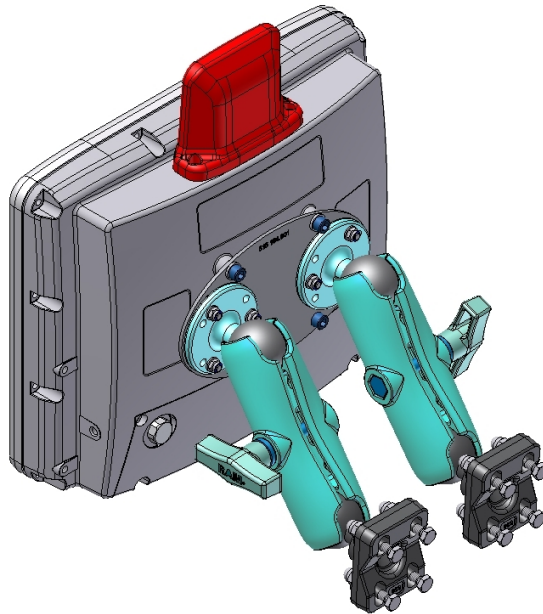


Order number: DL-BMEMT70146300

Technical data:

- Includes screw set (Terminal-side)
- Ball 1.5"
- 2 arms
- Arm length 150 mm
- Suitable for mobile use according to class 5M3

### 2.2.4. RAM-Mount Set Long, Double Arm, Ball 1.5", Tube Mounting for DLT-V8310



Order number: 701193

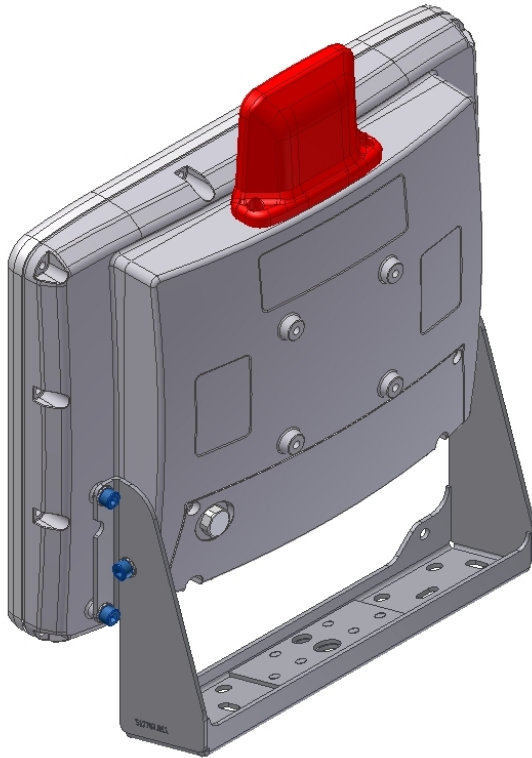
Technical data:

- Includes screw set (Terminal-side)
- Ball 1.5"
- 2 arms
- Arm length 150 mm
- For tube mounting
- Suitable for mobile use according to class 5M3

## 3. DLT-V8312

### 3.1. Mounting Brackets / Adapters

#### 3.1.1. Mounting Bracket for DLT-V8312

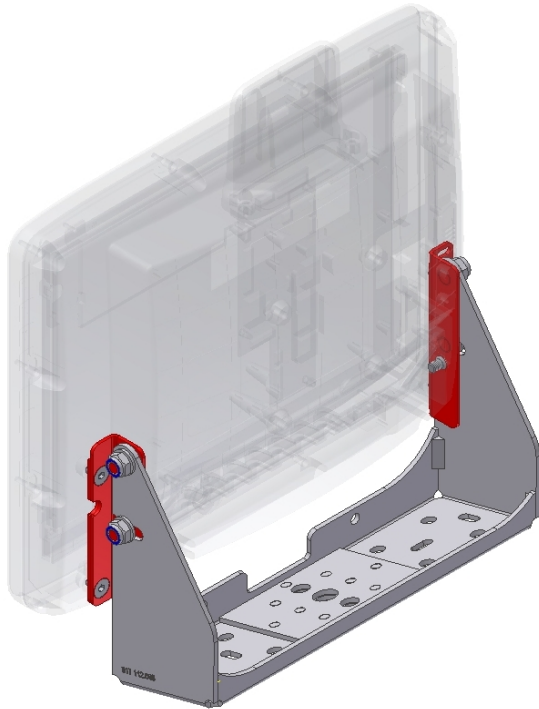


Order number: DL-MEMT79375000

Technical data:

- Includes screw set (Terminal-side)
- Suitable for mobile use according to class 5M3

### 3.1.2. Adapter for Reusing MPC 6/12 Mobile Mounting Bracket for DLT-V8312



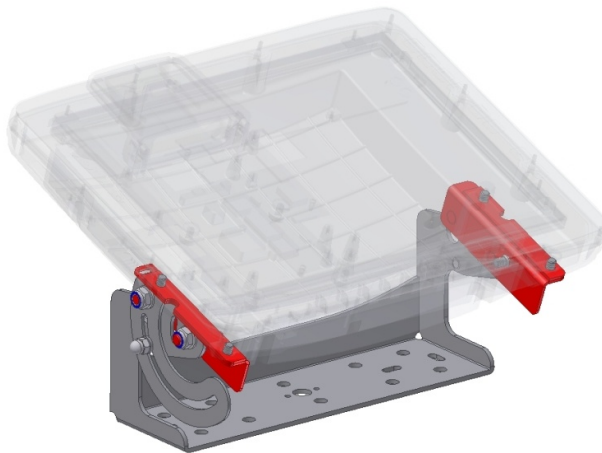
Order number: DL-MEMS79375800

Adapter set for reusing the mobile mounting bracket of the predecessor terminal MPC 6/12.

Technical data:

- Includes screw set (Terminal-side)
- Suitable for mobile use according to class 5M3

### 3.1.3. Adapter for Reusing MPC 6/12 Stationary Mounting Bracket for DLT-V8312



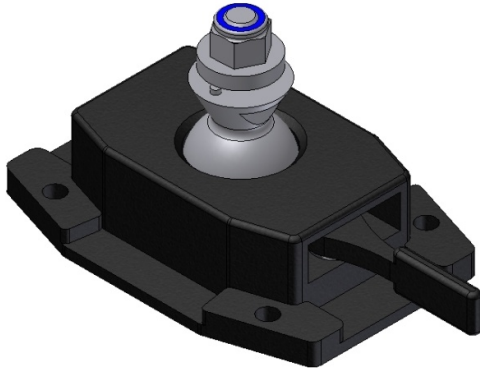
Order number: DL-MEMS79375900

Adapter set for reusing the stationary mounting bracket of the predecessor terminal MPC 6/12.

Technical data:

- Includes screw set (Terminal-side)
- Suitable for stationary use according to 5M1

### 3.1.4. Clamp mount small for DLT-V8312

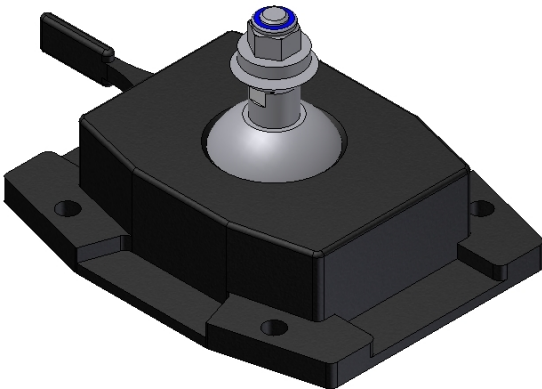


Order number: DL-CMECF51029001

Technical data:

- Includes screw set (Terminal-side)
- Suitable for restricted mobile use according to class 5M2

### 3.1.5. Clamp mount maxi for DLT-V8312



Order number: DL-CMECF51029100

Technical data:

- Includes screw set (Terminal-side)
- Suitable for restricted mobile use according to class 5M2

### 3.1.6. Clamp mount adapter low for DLT-V8312



Order number: DL-MEMT70123500

Technical data:

- Includes screw set (Terminal-side)
- Suitable for restricted mobile use according to class 5M2

### 3.1.7. Clamp mount adapter high for DLT-V8312



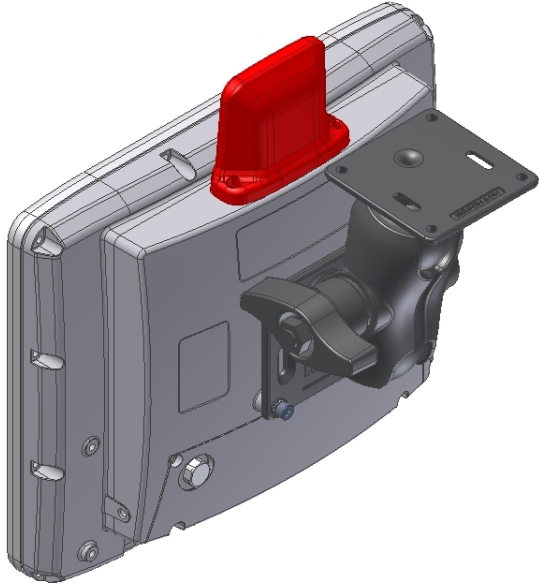
Order number: DL-CMENT70123400

Technical data:

- Includes screw set (Terminal-side)
- Suitable for restricted mobile use according to class 5M2

## 3.2. RAM-Mount

### 3.2.1. RAM-Mount Set Short, Ball 2.25" for DLT-V8312

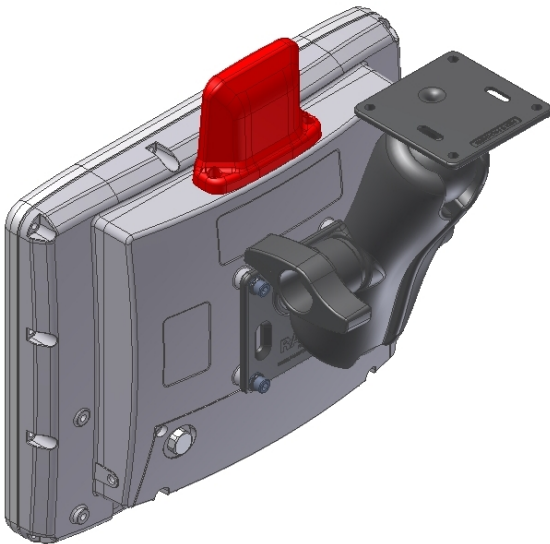


Order number: DL-CMENT70129800

Technical data:

- Includes screw set (Terminal-side)
- Ball 2.25" (with plate)
- 1 arm
- Arm length 130 mm
- Suitable for mobile use according to class 5M3

### 3.2.2. RAM-Mount Set Long, Ball 2.25" for DLT-V8312



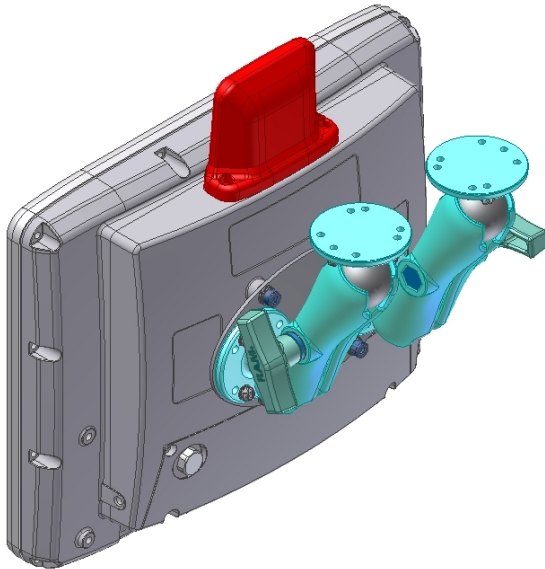
Order number: DL-CMENT70129700

Technical data:

- Includes screw set (Terminal-side)
- Ball 2.25" (with plate)
- 1 arm
- Arm length 215 mm
- Suitable for mobile use according to class 5M3



### 3.2.3. RAM-Mount Set Long, Double Arm, Ball 1.5" for DLT-V8312

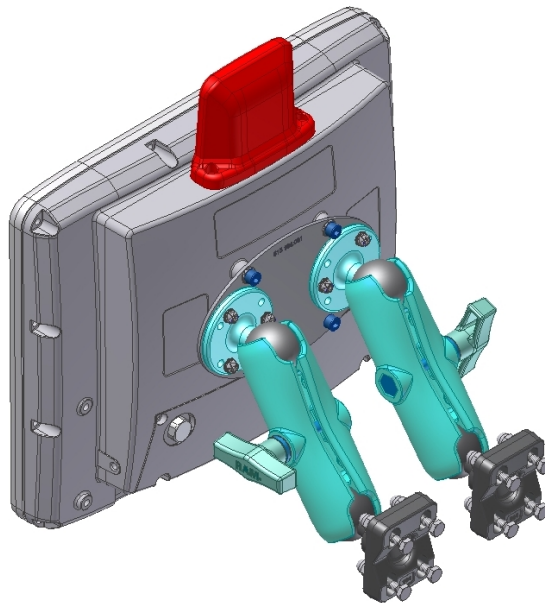


Order number: DL-BMEMT-70146300

Technical data:

- Includes screw set (Terminal-side)
- Ball 1.5"
- 2 arms
- Arm length 150 mm
- Suitable for mobile use according to class 5M3

### 3.2.4. RAM-Mount Set Long, Double Arm, Ball 1.5", Tube Mounting for DLT-V8312



Order number: DL-CMEMT70119300

Technical data:

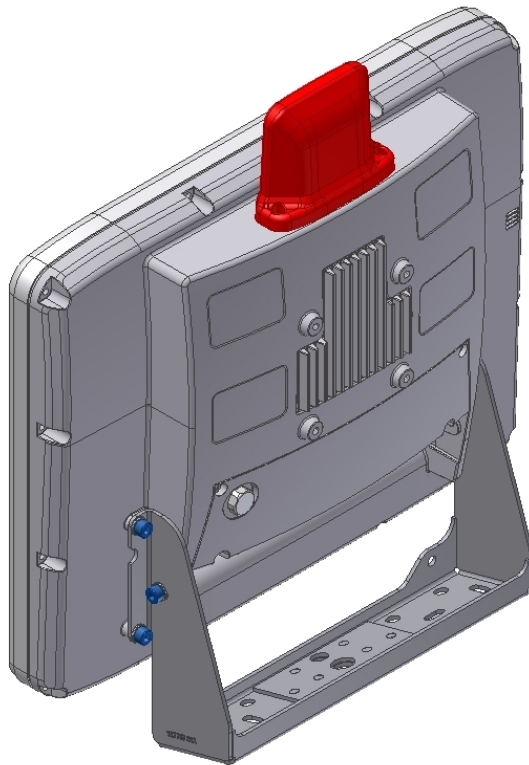
- Includes screw set (Terminal-side)
- Ball 1.5"
- 2 arms
- Arm length 150 mm
- For tube mounting
- Suitable for mobile use according to class 5M3



## 4. DLT-V8315

### 4.1. Mounting Brackets / Adapters

#### 4.1.1. Mounting Bracket for DLT-V8315

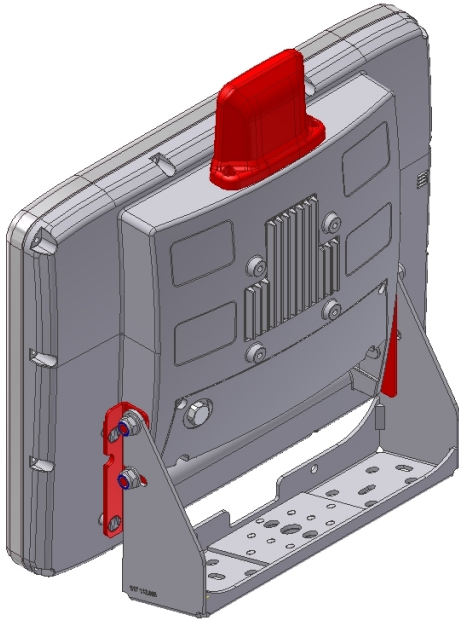


Order number: DL-MEMT79375000

Technical data:

- Includes screw set (Terminal-side)
- Suitable for restricted mobile use according to class 5M2

#### 4.1.2. Adapter for Reusing MPC 6/15 Mobile Mounting Bracket for DLT-V8315



Order number: DL-MEMS79375800

Adapter set for reusing the mobile mounting bracket of the predecessor terminal MPC 6/15.

Technical data:

- Includes screw set (Terminal-side)
- Suitable for restricted mobile use according to class 5M2

#### 4.1.3. Adapter for Reusing MPC 6/15 Stationary Mounting Bracket for DLT-V8315



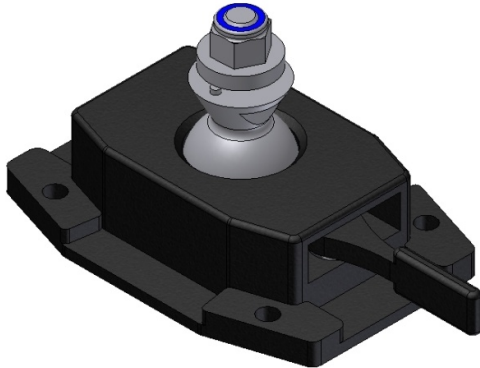
Order number: DL-MEMS79375900

Adapter set for reusing the stationary mounting bracket of the predecessor terminal MPC 6/15.

Technical data:

- Includes screw set (Terminal-side)
- Suitable for stationary use according to 5M1

#### 4.1.4. Clamp mount small for DLT-V8315



Order number: DL-CMECF51029001

Technical data:

- Includes screw set (Terminal-side)
- Suitable for stationary use according to class 5M1

#### 4.1.5. Clamp mount maxi for DLT-V8315



Order number: DL-CMECF51029100

Technical data:

- Includes screw set (Terminal-side)
- Suitable for stationary use according to class 5M1

#### 4.1.6. Clamp mount adapter low for DLT-V8315



Order number: DL-MEMT70123500

Technical data:

- Includes screw set (Terminal-side)
- Suitable for stationary use according to class 5M1

#### 4.1.7. Clamp mount adapter high for DLT-V8315



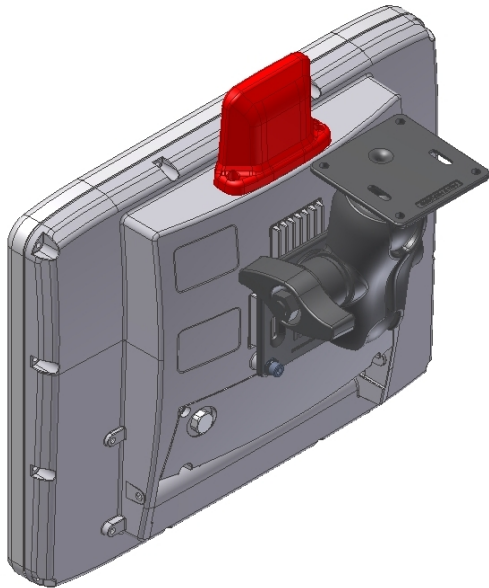
Order number: DL-CMEMT70123400

Technical data:

- Includes screw set (Terminal-side)
- Suitable for stationary use according to class 5M1

## 4.2. RAM-Mount

### 4.2.1. RAM-Mount Set Short, Ball 2.25" for DLT-V8315

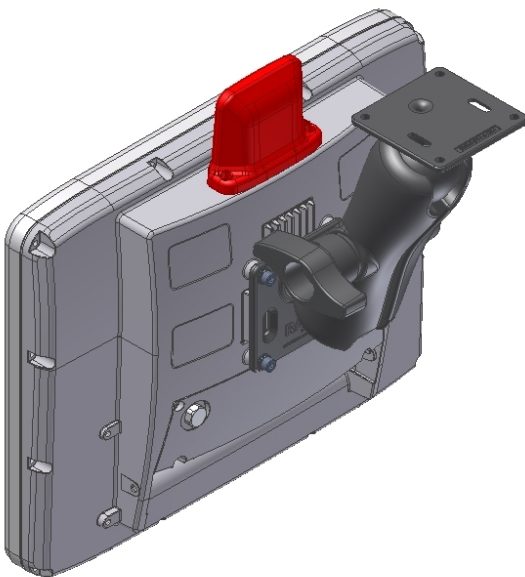


Order number: DL-CMEMT70129800

Technical data:

- Includes screw set (Terminal-side)
- Ball 2.25" (with plate)
- 1 arm
- Arm length 130 mm
- Suitable for stationary use according to class 5M1

### 4.2.2. RAM-Mount Set Long, Ball 2.25" for DLT-V8315



Order number: DL-CMEMT701297

Technical data:

- Includes screw set (Terminal-side)
- Ball 2.25" (with plate)
- 1 arm
- Arm length 215 mm
- Suitable for stationary use according to class 5M1