

1745C

Rear Mount



17" CRT Touchmonitor

SPECIFICATIONS

Model		1745C
Case/Bezel color		Metal/black
Display type		FST CRT
Display size	Diagonal	17.0" (43.2 cm)
	Viewable	15.8" (40.1 cm)
Display area dimensions, nominal	Default	12.0" (30.5 cm) H x 9.0" (22.9 cm) V
	Maximum	12.2" (31.1 cm) H x 9.1" (23.0 cm) V
Monitor dimensions	Width	16.5" (42.0 cm)
	Height (including base)	13.2" (33.8 cm)
	Depth (including base)	16.3" (41.5 cm)
Dimensional drawing number		MS500144 (available at www.elotouch.com)
Highest recommended resolution		1024 x 768 at 85 Hz
Resolution presets		1280 x 1024 at 65 Hz (PC)
		1024 x 768 at 85 Hz (PC)
		1024 x 768 at 75 Hz (Mac)
Dot pitch, nominal		0.27 mm
Video bandwidth		110 MHz
Scanning frequency		Horizontal 30–70 kHz; vertical 50–150 Hz
Input video format		Analog (no proprietary video card needed)
Input video signal connector		Mini D-Sub 15-Pin (female)
Power supply		90–264 VAC, 50–60 Hz
Power dissipation		80 W max.
Temperature		Operating 10°C to 40°C; storage –20°C to 60°C
Humidity		Operating 35% to 80%; storage 5% to 85%; noncondensing
Weight (approx.)		Actual 39.0 lb (18.0 kg); shipping 47.0 lb (21.0 kg)
Warranty	Monitor	2 years
	Touch technology	5 years iTouch touchscreen
	Touch controller	5 years
	CRT tube life	12,000 minimum hours to half brightness
Other features		Digital on-screen display (OSD); ENERGY STAR; VESA DPMS/Nutek; VESA DDC 1/2 B Plug and Play; ISO 9241/3

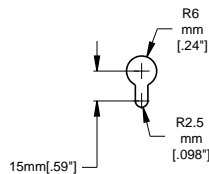
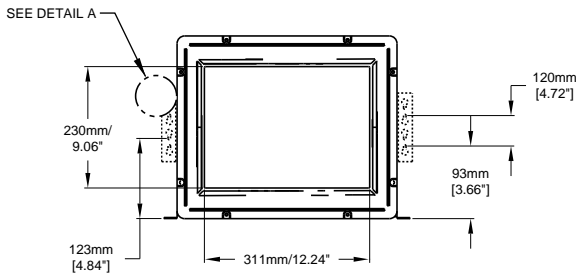
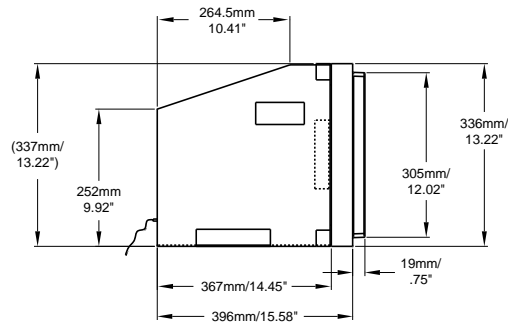
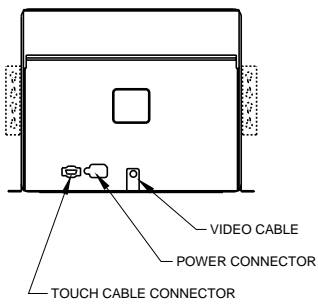
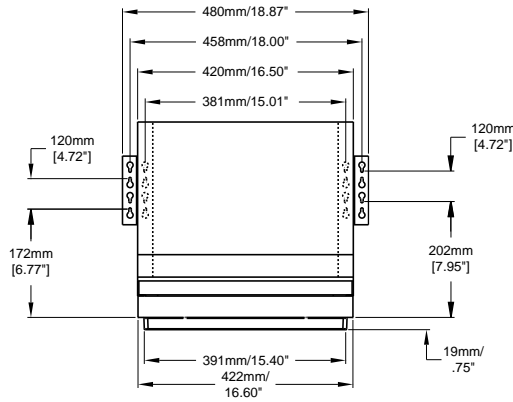
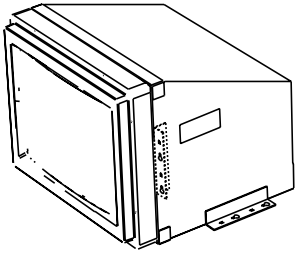
ORDERING INFORMATION

Touch Technology	Touch Interface	Surface Treatment	Elo Part Number	Agency Approvals
iTouch	Serial	Antiglare	140926-000	UL, cUL, FCC, CE, TUV-GS, MPR II
iTouch	USB	Antiglare	453624-000	UL, cUL, FCC, CE, TUV-GS, MPR II

- Users should independently evaluate the suitability of the product for their application.
- All prices, models, and availability subject to change without notice.

- Stock quantities may be limited. Larger quantities are available within one week.
- For Product Agency Certifications refer to our Web site.

17" CRT Touchmonitor



DETAIL A
SCALE 5:1

NOTE:
OSD CONTROLS ACCESSED
FROM BOTTOM OF UNIT