



EPICenter

Networking environments are constantly changing. Information comes from multiple sources, network traffic is unpredictable and performance demands are steadily rising. The emergence of new applications will continue to increase this momentum. Knowing what your network looks like, what's up and what's down, and how everything is configured is essential to delivering the applications and performance users demand.

Extreme Networks' EPICenter™ management suite is a scalable full-featured network management tool that simplifies configuration, troubleshooting, and status monitoring of IP-based networks. Offering a comprehensive set of network management applications providing the ability to configure, monitor, troubleshoot, and manage the network and its elements, EPICenter delivers on both the basic requirements of network management while adding valuable and intuitive features that help save time by streamlining common tasks. For secure management, it also supports SNMPv3 encryption and authentication as well as SSH2 clients for communication with your network devices.

Features built into EPICenter include:

- Workflow optimized design
- Client / server architecture for ease of use and flexibility. Client can also run in a web browser
- Unified Syslog and SNMP alarm manager provides a single source for all device information
- Distributed server support for scalable management
- Physical and logical topology – see every element of your network and how it's all connected
- Fault management and alarm view – see the health and status of every element of your network
- Configuration management – configure multiple elements and images, perform multistep upgrades and archive device configurations
- HTML report generator – provide easily accessible web based reports
- ExtremeView –extensive switch configuration and status monitoring for individual switches
- Inventory Tool – discovery and inventory of the managed devices
- VLAN Manager – create and manage multiple switched VLANs
- Real-time Statistics – see multi-port, multi-device real-time statistics
- IP/MAC Address Finder – quickly locate IP/MAC addresses across your entire infrastructure
- Administration Tool – utilize centralized user administration and RADIUS authentication
- Abstract Type Library – allows adding support for future hardware and software in the field
- Spanning Tree Monitor – displays network wide spanning tree status
- Monitoring of 3rd party devices – keep an eye on that expensive equipment your boss insisted on buying when he had your job, but wasn't nearly as good at it
- Coexistence with other NMS tools via configurable functionality- ability to disable EPICenter functionality on a per applet basis

EPICenter Policy Manager is a functionality upgrade to EPICenter, adding fine grain control and monitoring of Quality of Service, Access Control Lists and Network Login / 802.1x based network access security as well as application of user based dynamic policies for intelligent network access. Based on user credentials and login, ACLs and QoS settings can be dynamically applied to an edge port. Policy Manager can interact with LDAP directories to obtain user information. Policy Manager also assists in defining QoS settings for your VoIP infrastructure.

EPICenter is an integral part of Extreme's Infrastructure and Service Management (ISM) software offerings. Also in the Extreme ISM portfolio is ServiceWatch®, Extreme's Layer 4 - 7 application watchdog. The total Extreme ISM portfolio has got you covered from the infrastructure up through the application layer. Whether you have small, medium or large management needs, Extreme has a solution for you.

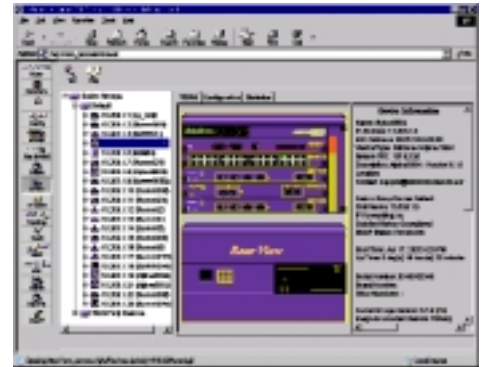
EPICenter Product Specifications

Switch Requirements

Extreme Switch Platform
Summit™ series
BlackDiamond® 6800 series

Alpine™ 3800 series

ExtremeWare Versions Supported
ExtremeWare v2.1.10 or later
ExtremeWare 3.0.9b4 or later (3.0.9b4 is a patch release to address an agent issue found in v3.0.9b3)
ExtremeWare v6.1.5b20 or later



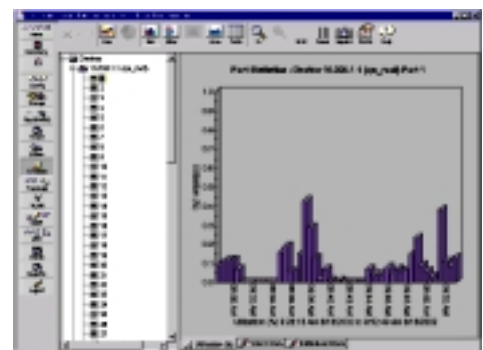
Server Requirements

Server Platform
Windows XP Professional
Windows 2000

Requirements
256 MB RAM (512 MB recommended)
200 MB disk space
500 MHz Pentium-compatible processor

Solaris 2.7 or 2.8

256 MB RAM (512 recommended)
200 MB disk space
Ultra 5 or Higher processor



Client Requirements

Platform
Windows XP Professional
Windows 2000

Browser Configuration Description
Internet Explorer or Internet Explorer 5.5 with Service Pack 1

The Java 1.3.1.03 plug-in is required. This plug-in is included on the EPICenter client start-up page.

Solaris 2.7 or 2.8

Netscape Navigator 4.72 or later.



Ordering Information

Order Number	Product	Description
81411	EPICenter	EPICenter is a configurable network management suite for status monitoring, configuration and troubleshooting of networks based on Extreme Networks switches. Supports secure communication via SNMPv3 and SSH-2. Manages up to 250 network devices
81412	EPICenter Gold Upgrade	EPICenter Gold Upgrade is a scalability upgrade to the EPICenter software suite via license key to enable the distributed server in EPICenter and management of up to 2000 network devices. Requires EPICenter
81414	EPICenter Policy Manager	EPICenter Policy Manager Upgrade is a functionality upgrade to the EPICenter software suite via license key to enable enforcement of security and QoS/ACL policies as well as VoIP QoS configuration assistance. Requires EPICenter

Note: EPICenter and its Gold and Policy Manager Upgrade licenses is licensed per Major Release. Extreme's EPICenter Software Subscription program allows customers to always stay current with the latest Major Release.

For the latest EPICenter product specifications, check out www.extremenetworks.com

For more product information from Extreme Networks, please call 1.888.257.3000. 3585 Monroe Street, Santa Clara, CA 95051-1450 Phone 408.579.2800 Fax 408.579.3000 Email info@extremenetworks.com Web www.extremenetworks.com

© 2003 Extreme Networks, Inc. All rights reserved. Extreme Networks, BlackDiamond, Summit, Summit7i, ExtremeWare, ServiceWatch, Extreme Ethernet Everywhere, Ethernet Everywhere, Extreme Velocity, Extreme Turbodriven and the color purple are registered trademarks of Extreme Networks, Inc. in certain jurisdictions. Alpine, ExtremeWare Vista, Extreme Standby Router Protocol, ESRP, Summit1i, Summit4, Summit4/FX, Summit5i, Summit24, Summit24e2, Summit24e3, Summit48, Summit48i, SummitLink, SummitGbX, SummitRPS, SummitPx1, PxSilicon, EPICenter, vMAN, the BlackDiamond logo, the Alpine logo and the Extreme Networks logo are trademarks of Extreme Networks, Inc., which may be registered or pending registration in certain jurisdictions. ExtremeWorks, the Extreme Turbodriven logo and the Go Purple-Extreme Solution Partner logo are service marks of Extreme Networks, Inc., which may be registered or pending registration in certain jurisdictions. All other registered trademarks, trademarks and service marks are property of their respective owners. Specifications are subject to change without notice. L-DS-EPI-307

