

Extreme Networks' Unified Access (UA) RF Manager is a standalone application that includes all the tools needed to take your wireless network from concept to deployment. An accurate wireless design means that you won't spend money for redeployment or deal with frustrating coverage holes. With RF Manager, the need for tedious and expensive manual site surveys is eliminated.

Although UA RF Manager will guide you through the design process step by step, it doesn't compromise functionality for ease of use. It provides advanced options for network optimization and tuning to ensure you make the most of your wireless investment.

Our wireless network is an evolving entity, and UA RF Manager will guide you in taking it from a pilot implementation to a secure, high availability network, ready to handle ever-increasing user demands for availability and high performance.

Simplifies Wireless Design

UA RF Manager satisfies the key steps in wireless design:

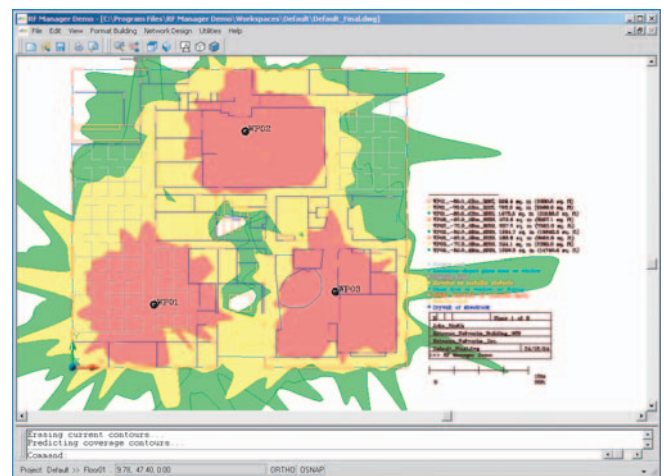
- **Architectural-Grade Floorplan Import:** Makes the floor plan import process as intuitive and simple as possible, regardless of the source.
- **Design Requirements Specification:** Use RF Manager to graphically indicate desired coverage and throughput level (even compensates for the number of people in a room). Tell UA RF Manager where you want to minimize signal leakage (design a "tight" RF network).
- **Simultaneous 3-D Tri-Mode Simulations (802.11a/b/g):** Provides simultaneous simulation of all 802.11 wireless standards supported by Extreme's dual-radio Altitude wireless port. Our patented wireless simulation engine properly attenuates both 2.4 GHz and 5 GHz signals through all barriers (walls, windows, floors and ceilings).
- **Correlate Design to Real World:** Provides real-world design tuning by collecting signal measurements from remote agents. This ensures attenuation values are accurate throughout the building.
- **Deploy:** Lets you gauge deployment from a parts list, mapped to a floor plan indicating the exact placement of Altitudes to your switch configuration.
- **Grow:** Lets you evolve your network. Assists in adding capacity to transform and upgrade the performance capability of your wireless network.
- **Extensible Barrier Library:** Walls, doors, windows and floors all affect signal propagation. A keystone of RF modeling is to accurately represent signal attenuation through these barriers. In addition to a library of standard barriers, UA RF Manager provides the ability to define your own barriers to compensate for building-specific construction such as thickness or material.

Provides Ease of Use

This highly-evolved wireless design engine is presented in an intuitive graphical user interface so you can design and visualize your site without having to be a radio engineer.

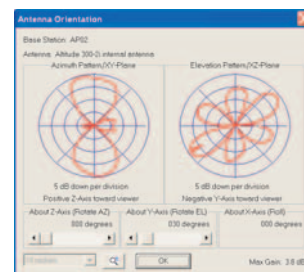
- **Powerful Graphical Interface** lets you view and manipulate 3D renderings of the building and overlaying wireless coverage from any perspective.
- **Wizard-based Processes** for an easy but accurate import of floor plans into the UA RF Manager. If CAD-based versions of the floor plans aren't available, tools are available to use scanned floor plans or blueprints.

- **Real-Time Simulation** lets you instantly see the results of design changes.
- **Full Auto-Design Modes** allow the UA RF Manager to automatically design the wireless network by setting the Altitudes at the proper locations, and adjusting power settings and channels to your requirements.
- **Coverage or Capacity Options** let you specify either uniform connection rates throughout the design, or different rates based on the expected number of numbers of users in a single location.
- **Virtual Client Simulation Mode:** Allows the designer to simulate an individual client roaming the building, showing instantaneous expected throughput from the primary and secondary access point.
- **Altitude Auto-Configuration** translates the graphical design into real configurations.
- **Parts List Export** provides the parts needed for the design



Power Tools for Switch-Centric Wireless Design

The UA RF Manager Wizards can guide you through a successful wireless design within minutes, and they include powerful network tuning features and unprecedented capabilities to design with detachable antennas.



DATA SHEET - UNIFIED ACCESS RF MANAGER

- **Antenna Orientation Tool:** This tool increases the efficiency of the Altitude wireless ports by letting you to specify the exact orientation of the antenna (height, pitch, yaw and azimuth), giving you full control of the articulated, integrated antennas of the Altitude 300-2i or the detachable dual/band antenna.
- **Altitude Placement Watch** knows which switch the Altitude will connect to and warns you if you are placing Altitude outside the 100 meter range for a Fast Ethernet connection.
- **Extensible Antenna Library:** To design for applications requiring specialized antennas from other manufacturers, simply import the pattern into the UA RF Manager.
- **Remote Measurement Collection Agents:** Used for design optimization or troubleshooting, client agents let you to measure in-building signal and throughput. Loadable on laptops, the client tool incorporates the building design, allowing you to match signal or throughput measurement with location.
- **Design Optimizer:** With real-world data collected from the remote agents, you can tune the entire design to reveal potential design holes, minimizing the need for expensive redeployment/relocation of access points. The client's perspective provides highly accurate tuning data—not a limited and artificial “access point to access point” perspective.

Other Features

- **Country-specific design features:** UA RF Manager understands the regulatory and frequency restrictions and won't let you design an illegal network.

Wide variety of file import and export capabilities:

- Import: AutoCAD *.DWG, and *.DXF (drawing exchange format) files, Windows Metafile (*.WMF), and certain raster image file imports (*.BMP, *.TIFF, and *.JPG).
- Export Formats: AutoCAD *.DWG and *.DXF (drawing exchange format) files, and Windows Bitmap *.BMP.

Unified Access RF Manager Product Specifications

Switch Requirements

Extreme Switch Platform

- Altitude Wireless Port Dual Radio Access Point
- Unified Access Switch

Server Requirements

Server Platform

- Windows XP
- Window 2000
- Windows 98

Server Requirements

- 256 MB RAM (512 MB recommended)
- 100 MB disk space
- Intel Pentium III or better
- CD-ROM Drive for installation

Ordering Information

Product

Part Number	Description
15451	Unified Access RF Manager: Full building floorplan import/export tools. Full design simulation tools (both automatic and manual). Antenna Design Wizard. 10 Altitudes per open design. Unlimited number of designs.
15452	Unified Access RF Manager (Advanced). Same features as the RF Manager (above). Includes remote agent data collectors and RF Optimization Tool. Unlimited Altitudes per open design. Unlimited number of designs.
15453	Upgrade Key from RF Manager to RF Manager Advanced

Service

Part Number	Description
97003-RF	1 year software subscription to Unified Access RF Manager
97003-RFA	1 year software subscription to Unified Access RF Manager Advanced
97003-RFU	1 year software subscription to Unified Access RF Manager Upgrade

3585 Monroe Street Santa Clara, CA 95051-1450

Phone 408.579.2800 Fax 408.579.3000

Email info@extremenetworks.com Web www.extremenetworks.com

© 2004 Extreme Networks, Inc. All rights reserved.

Extreme Networks, and the Extreme Logo are either registered trademarks or trademarks of Extreme Networks, Inc. in the United States and/or other countries.



G O B E Y O N D

Specifications are subject to change without notice. L-DS-RFMANAGER-408