

**Designed To Make
Data Collection Easy....**



Ergonomic and Rugged...Real Time Data Capture...Easy To Deploy and Manage...



Retail In-Store...

Datalogic's Skorpio™ X3 mobile computer fits a variety of Retail In-Store environments from department stores to specialty stores, from hyper and supermarkets to convenience stores, grocery and DIY. The Skorpio™ X3 mobile computer is primarily used by the retail store associate either for assisted sale or to carry out a variety of inventory accountability and communications tasks.

Stock counts for year-end inventory, spot checks on items with high shrink, and receiving activities require the highest possible speed and accuracy to complete the activity in the shortest possible time. Price checking on the shop floor, picking lists, items verification (not to lose any of those on display on the shop floor) and wall profitability systems (how business went in the last X days for each specific shelf in a shop) all require communication with the host system for associate direction. Voice communications and online resources help the associate quickly track down answers to customer questions.

The Skorpio™ X3 mobile computer delivers the ultimate in ergonomics, intuitive user interface, computing and data capture technologies, combined with a best-in-class ruggedness. The device's Summit IEEE 802.11 a/b/g radio with CCX v4 certification from Cisco ensures the highest level of security for PCI compliance. Datalogic innovations include the patented good read feedback to better blend with the retail floor mood and the inclined scan engines, both 1D and 2D, are a great value-add to support and alleviate the associates' everyday work, by making aiming and reading a much faster and easier task. The Skorpio™ X3 mobile computer thus results in a product that is effortless to develop for, deploy and manage.

Warehouse...

Starting with the typical activities in the back-office of Retail shops and stores, Skorpio™ X3 mobile computer fits a variety of other warehouse environments as well, including:

- Distribution Centers
- Manufacturing Warehouses
- Third Party Logistics (3PL)

Warehouse users of mobile computers carry out a variety of inventory accountability and communications tasks centered on the receipt and disposition of goods. Receiving starts the process as new material arrives at a facility. In some cases, goods will literally be transferred from incoming to outgoing trucks, a function called cross docking. Sorting and put away operations require communication and direction from the host system to ensure the goods are accurately stored for later retrieval. Picking and staging activities kick off the shipping process. Finally stock counts for year-end inventory and cycle counts to verify inventory accuracy must be completed in the shortest possible time.

The new Skorpio™ X3 mobile computer delivers exceptional ergonomics to alleviate the operators' fatigue, best-in-class ruggedness, computing and data capture technologies to provide a tailored solution for demanding environments needing real time transaction visibility.



Easy to Integrate...



DATALOGIC CONFIGURATION UTILITY

The Datalogic Configuration Utility is an easy to use PC based application to set up and configure the mobile device.

DATALOGIC DESKTOP UTILITY

The Datalogic Desktop Utility restricts computer access according to business need. Limitations can be placed on Internet Explorer and the desktop.

DATALOGIC FIRMWARE UTILITY

The Datalogic Firmware Utility upgrades mobile computer firmware.

SDK™

Windows SDK™, an open source software development kit (SDK), aids in creating applications for Windows operating systems or alternative environments like Java Virtual Machine. The SDK provides a set of libraries allowing easy application development using C++ and .NET programming languages.


WAVELINK AVALANCHE - PRELICENSED

Wavelink® Avalanche®, Mobility Center or Site Edition, streamlines device deployment, site management and maintenance. Scan to Configure functionality configures devices by simply scanning a set of customized bar codes.

WAVELINK TERMINAL EMULATION – PRELICENSED (for pistol grip models)


Wavelink's Terminal Emulation™ (TE), the industry standard, extends mission-critical applications resident on mainframe systems out to mobile workers. TE is a comprehensive solution for accessing and managing connections to applications resident on host systems using 5250, 3270, VT and HP emulation.

Top Features...




Inclined Scan Engine enables easy viewing of the display while scanning.


Crystal clear, 3.2" QVGA color display. The largest high resolution color display with a touch screen in its class.




Standard and High Capacity batteries.




Micro USB connector for quick charging from standard power supplies.



1D or 2D reader with Datalogic Green Spot.




Rugged 1.5 m / 5 ft drops to concrete and IP64 protection for harsh environments.



Easily convert to pistol grip or hand held use with detachable handle.



Stylus integrated into the device body.



Rear scan button for convenient scanning in any position.

Options...

Accessories...

FORM FACTOR



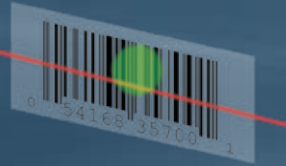
Handheld

KEYBOARDS



Numeric 28-Key

SCANNER



1D laser with Green Spot

OPERATING SYSTEM

Windows CE 6 release 3 delivers a streamlined real-time operating system that maximizes storage space and minimizes device start up times. CE6 comes with Internet Explorer.



Pistol Grip



Alphanumeric 38 Key



2D Imager with Green Spot

Windows Embedded Handheld 6.5 user interface minimizes training needs while offering application portability across products. WEHH 6.5 comes with Microsoft Office Mobile, Word Mobile, Excel Mobile and Internet Explorer Mobile.



Full Alphanumeric 50-Key



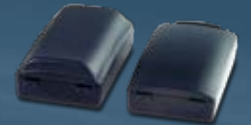
Single Slot Dock



Single Slot Dock:
Ethernet - Modem Module



Four Slot Dock
Ethernet - Charger



Standard and
High Capacity Batteries



Four Slot Battery Charger



Holster



Soft Case



Vehicle Holder



Specifications...

SOFTWARE

DEVELOPMENT

Datalogic Windows SDK™
 Wavelink® Studio™
 MCL-Collection™
 Java Virtual Machine

CONFIGURATION AND MAINTENANCE

Wavelink Avalanche® MC Pre-licensed
 Wavelink Avalanche® SE Pre-licensed
 Avalanche Remote Control™
 Datalogic Firmware Utility
 Datalogic Desktop Utility
 Datalogic Configuration Utility

TERMINAL EMULATION (for pistol grip models)

Wavelink® Terminal Emulation Pre-licensed

SECURITY

Wavelink CE Secure
 Wavelink Certificate Manager

APPLICATIONS

Wavelink® Industrial Browser™
 Wavelink SpeakEasy Voice Recognition
 Pal™ Application Library Pre-licensed

WIRELESS COMMUNICATIONS

LOCAL AREA NETWORK (WLAN) Summit IEEE 802.11 a/b/g
 Frequency range: Country dependent, typically 2.4 and 5.2 GHz; Cisco Compatible CCX v4 Security

PERSONAL AREA NETWORK (WPAN) Bluetooth® wireless technology IEEE 802.15 Class 2 with EDR

DECODING CAPABILITY

1D / LINEAR CODES Auto discriminates all standard 1D codes including GS1 DataBar™ linear codes.

2D CODES Aztec Code, Data Matrix, MaxiCode, QR Code, UPU FICS, USPS Intelligent Mail

POSTAL CODES Australian Post, Japan Post, KIX Code, Planet, Postnet, Royal Mail Code (RM4SCC)

STACKED CODES Micro PDF, PDF417

ELECTRICAL

BATTERY Removable battery pack with rechargeable Li-Ion batteries.
 Local micro-USB connection for fast battery charging
 Standard: 3.7 V; 3,000 mAh (11.1 Watt-hours)
 Extended: 3.7 V; 5,200 mAh (19.2 Watt-hours)

ENVIRONMENTAL

DROP RESISTANCE Withstands drops from 1.5 m / 5.0 ft onto concrete

PARTICULATE AND WATER SEALING IP64

TEMPERATURE Operating: -10 to 50 °C / 14 to 122 °F
 Storage: -20 to 70 °C / -4 to 158 °F

INTERFACES

INTERFACES Main connector with USB 1.1 Host, USB 1.1 Client, RS-232 up to 115.2 Kbps
 Micro-USB port for power only, no data communication interface
 Ethernet: via single dock (external module) or multiple cradle

PHYSICAL CHARACTERISTICS

DIMENSIONS Handheld: 19.3 x 7.6 x 4.2 cm (6.1 x 3.5 cm at keyboard) / 7.6 x 3.0 x 1.3 in (2.4 x 1.4 in at keyboard)
 Pistol Grip: 19.3 x 7.6 x 15.6 cm / 7.6 x 3.0 x 6.2 in

DISPLAY TFT / Transflective LCD with 240 x 320 pixel resolution, LED backlight and integrated touch screen, 3.2 in diagonal

KEYBOARD 50-key full alphanumeric, 38-key functional or 28-key numeric keyboard with backlight

WEIGHT Handheld (with standard battery): 392 g / 13.8 oz
 Pistol Grip (with standard battery): 482 g / 17.0 oz

READING PERFORMANCE

IMAGING Good Read Feedback: Datalogic's patented 'Green Spot' for good-read feedback
 Optical Resolution: Linear codes: 4 mils; 2D codes: 5 mils;
 Scan Rate: 60 frames/sec maximum
 Depth of Field: 3.5 to 41.5 cm / 1.4 to 16.4 in, depending on bar code density and type
 Wide Aspect Imager with Datalogic's patented Green Spot
 Depth of Field: 4.0 to 82.0 cm / 1.5 to 32.3 in, depending on bar code density and type

LASER Good Read Feedback: Datalogic's patented 'Green Spot' for good-read feedback; Optical Resolution: 0.10 mm (4 mils);
 Scan Rate: 104 +/- 12 scans/sec
 Standard Performance Laser (SPL) with Green Spot

SAFETY & REGULATORY

AGENCY APPROVALS The product meets necessary safety and regulatory approvals for its intended use.

ENVIRONMENTAL COMPLIANCE Complies to EU RoHS

LASER CLASSIFICATION VLD - Class 2 IEC/EN60825-1; Compliant with 21 CFR 1040.10 except for deviations pursuant to laser notice No. 50 dated June 24, 2007.

LED CLASSIFICATION Exempt Risk Group IEC/EN62471

SYSTEM

COPROCESSOR Cortex-M3, 32 bit @ 72 MHz

EXPANSION SLOTS Micro Secure Digital slot (SDHC) up to 32 GB

MICROPROCESSOR XScale PXA310 @ 624 MHz

MEMORY Ram Memory: 256 MB
 Flash Memory: 512 MB (partially used for firmware and reserved data, depending on the OS)

OPERATING SYSTEM Microsoft Windows CE 6.0 with Microsoft WordPad and Internet Explorer 6.0
 Microsoft Windows Embedded Handheld 6.5 with Mobile Tools: Outlook Mobile, Word Mobile, Excel Mobile, PowerPoint Mobile, One Note Mobile and Internet Explorer Mobile 6.0



DATALOGIC
AUTOMATIC DATA CAPTURE

959 Terry Street
Eugene, OR 97402
800-929-7899
info.adc.us@datalogic.com

www.adc.datalogic.com

The Bluetooth® word mark and logos are registered trademarks owned by Bluetooth SIG, Inc. and any use of such marks by Datalogic ADC, Inc. is under license.

© 2012 Datalogic ADC, Inc. All rights reserved. Protected to the fullest extent under U.S. and international laws. Copying, or altering of this document is prohibited without express written consent from Datalogic ADC, Inc. • Datalogic and the Datalogic logo are registered trademarks of Datalogic S.p.A. in many countries, including the U.S. and the E.U. and the Datalogic Automatic Data Capture logo is a trademark of Datalogic S.p.A. • The Skorpion logo is a registered trademark of Datalogic Mobile S.r.l. in the E.U. • Skorpion is a trademark of Datalogic Mobile S.r.l. • Pal is a trademark of Datalogic ADC, Inc. • All other brand and product names are trademarks of their respective owners.

Product specifications are subject to change without notice.

BR-SKORPIO X3-EN-US REVISION B 20121112

Caution: Laser Radiation - do not stare into beam

