

THINBILITY POS



APG CASH DRAWER®

The Stratis™ Integration Solution

A Mobile Solution for Greater Flexibility

Moving to a tablet based system? Still want the look and feel of an integrated POS terminal while maintaining the flexibility of Thinbility POS? The Stratis Integration System can solve your problems. Designed to present the tablet to both the clerk and the customer with a smooth rail system, the Tablet Holder has a pleasing look and is feature rich. The adjustable clamping system allows for a variety of tablet sizes to be used. A hidden button releases the tablet converting it from a Thin POS station to a mobile solution in seconds. The magnetic base secures the Tablet Holder to the drawer for easy and secure placement.

Cable management is included with the Stratis Integration System allowing the retailer to hide a variety of peripheral power cables including the tablet's USB charging cable. The Stratis cash drawer comes standard with a chrome strip on the rear of the drawer which faces the customer. Retailers can choose to add an optional LED strip to further add to the esthetics of the Integration System.

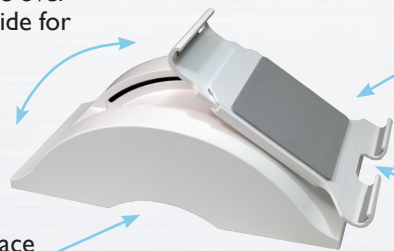
The Stratis™ holder enables a tablet to seamlessly slide over to the customer facing side for signature approvals

Tablet agnostic solution
Adjustable tablet holder fits tablets between 6.6" and 8.5"

iOS  

Magnetic base keeps the tablet holder firmly in place on top of the cash drawer

Push button release makes for easy transition between thin and mobile tablet use



The Stratis 1617 cash drawer is a sleek design and integrates easily into a retailer's modern cloud-based environment




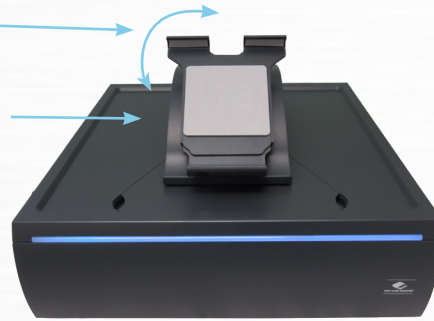
Includes USB power port for easy powering of your tablet under cable cover. Optional LED lighting also available.

INSTALL IT. FORGET IT.

Tablet can be placed in either portrait or landscape mode

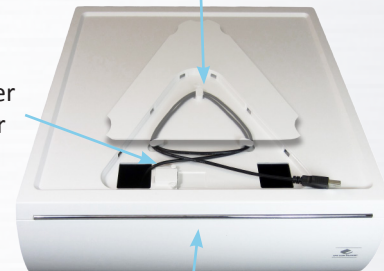
Magnetic connection between the tablet holder and the drawer

 Optional Bluetooth connectivity



Cable management provided under cover

USB power connector



Chrome or LED accent feature

Stratis 1617 Cash Drawer Features:

Size: (W x D x H, with feet)
• 16.2 x 17.25 x 5.25 inches
• 411 x 439 x 133 mm

Color: Black (BL) or White (AW)

Media: Dual media slots

Warranty: Two year warranty*

Cycle Life: Tested to last beyond one million transactions

Lighting: Optional LED accent lighting available

Interface: 24V Solenoid (BluePRO Bluetooth sold separately)

Till Options:

- Standard duty till molded with plastic hold downs
- US 5 bill, 5 coin included
- Additional tills to fit currencies from around the world

Lock Options: Four function lock: locked closed, locked open, online, & manual open

Key Options: Four keylock codes, keyed alike or random (standard)

Cable Management: Cabling is hidden with dual cable routing channels for both the tablet and printer

Part Numbers:

- VTC320-BL1617
- VTC320-AW1617
- VTL320-BL1617
- VTL320-AW1617

Stratis Tablet Holder Features:

Size: (W x D x H, with feet)
• 6.73 x 11.22 x 4.13 inches
• 171 x 285 x 105 mm

Color: Black (BL) or White (AW)

Tablets:

- Adjustable tablet holder for tablets between 6.625" and 8.5"
- Tablet release button allows easy transition between Thin and Mobile operation of the tablet

Feet:

- Rubber feet.
- Magnets connect the holder to the drawer

Presentation:

- 30 degree angle
- Present the tablet in either landscape or portrait positions
- Smooth rolling transition for moving the tablet to the customer for signature capture

Part Numbers:

- VTK-BL0711
- VTK-AW0711



INSTALL IT. FORGET IT.

APG Cash Drawer, LLC
5250 Industrial Blvd. N.E.
Minneapolis, MN 55421

Email: sales@apgcd.com
Phone: 763 571 5000
Fax: 763 571 5771

Copyright © 2014

*For a full warranty statement, please visit our website at <http://www.cashdrawer.com/support/warranty-statement>

(M-43-150 Rev C)