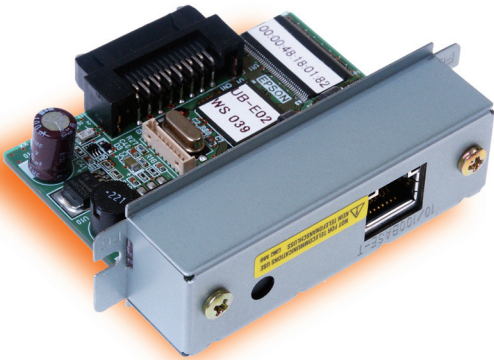


Epson

# Ethernet Interface Module



- Uses standard TCP/IP protocol
- Easy installation and configuration
- Options offer configuration via Windows® utility or standard web browser
- Field programmable firmware

Now you can place Epson printers anywhere on your network and access them from any location—even the Internet—with Epson's Ethernet Connect-It™ interface module.

Designed to increase printing speed and flexibility, the Epson Ethernet module provides a cost-effective solution to establish communications between host systems and your POS printers.

#### Wide range of options

Epson's Ethernet module allows Epson printers to be connected to any 10/100 Base-T Ethernet network. Our Ethernet module offers a wide range of interface and configuration options, enables remote configuration of printer network settings from anywhere on the network via standard web browser and includes field-upgradeable firmware to support functionality changes and enhancements.

#### Faster communications

Epson's Ethernet Module features speeds of up to 100Mbps and streamlines your POS system by using high-speed Ethernet. The result? Your system is free of bottlenecks for faster transactions and checkout lines.

#### Quick, simple installation

The module installs directly into the standard Connect-It slot in the printer. There are no external boxes or adapters as with other Ethernet solutions.

The module also features standard RJ-45 Ethernet connectors for easy plug and go operation.

#### Easy configuration

The Epson Ethernet module offers a simple, intuitive Microsoft® Windows utility for configuring your Epson printers for network operation. Once this has been completed, you can easily configure the rest of the module features via web browser or with the Microsoft Windows utility.

#### Superior reliability and lower maintenance costs

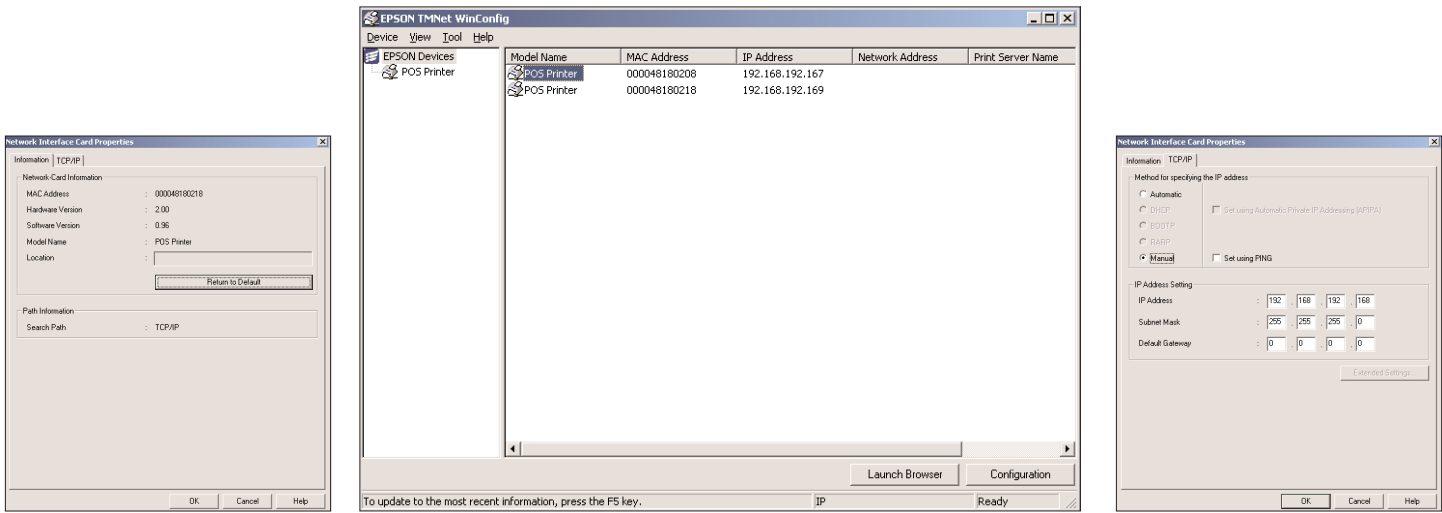
Epson POS printers with Connect-It technology meet the highest quality and reliability standards in the industry. And Epson printers are packed with superior design features that ensure ease of use, extended life and lower consumables and maintenance costs.

**EPSON®**

Technology with a future.™

# Epson Ethernet Interface Module

Module Specifications	
<b>Speed</b>	Up to 100Mbps
<b>Connection</b>	10/100 Base-T RJ-45 network connector
<b>Status LEDs</b>	Network traffic, Module/Network health
<b>Status Monitoring</b>	ENPC, SNMP
<b>Interfacing</b>	TCP/IP, OPOS, DHCP, Port 9100 Support, HTTP, BootP, LPD
<b>Configuration</b>	Browser-based configuration Windows utility for configuration and printer status reporting ARP plug support
<b>Diagnostic Support</b>	Offline report generation Status and traffic LEDs Field upgradeable
<b>Networks Supported</b>	Microsoft® and UNIX®
<b>Clients Supported</b>	Windows® 95/98/NT/2000/Me/XP and UNIX
<b>EMI Standards</b>	FCC Class A, CE
<b>Safety Standards</b>	UL, cUL



Epson’s Ethernet module offers a simple, intuitive Microsoft® Windows® utility for configuring your Epson printers for network operation.