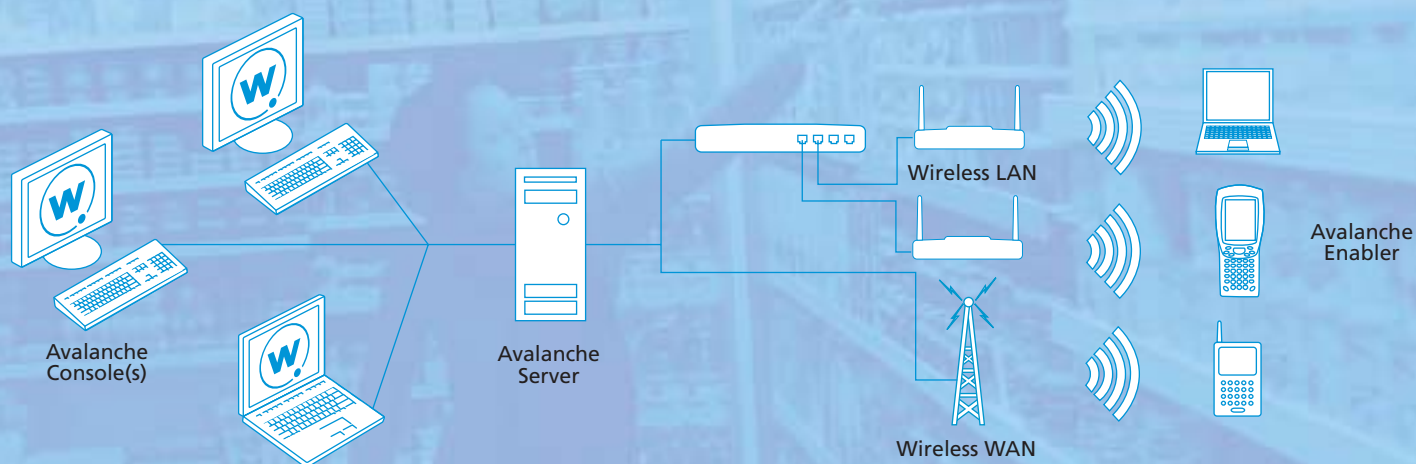


Reduce the Burden of Mobile Device Management

Wireless mobile devices evoke two distinct responses. Users wonder how they ever lived without wireless mobility. You wonder how to live with mobility—because the management challenges grow exponentially as usage increases. Master the challenges with Wavelink Avalanche™, proven software for centralized management of mobile devices.

Avalanche performs rapid, hands-off updates of wireless devices located anywhere in the enterprise. Remotely and seamlessly, it revises configurations, synchronizes software and updates firmware and drivers. Best of all, it cuts your costs—in time, money and morale—by reducing the burden on your IT resources and eliminating labor-intensive management of mobile equipment.



Manage Local and Remote Devices

With Avalanche, you can manage onsite devices through a wireless LAN and support remote sites over any WAN connection. The single, central console lets you check and deploy the right settings for a host of popular devices and operating systems: Symbol, Fujitsu, Intermec, PSC, HP/Compaq; Windows, Windows CE, Pocket PC, Palm and even legacy DOS. Once you've defined device-specific profiles for firmware, utilities, drivers, software and so on, Avalanche automatically handles the repetitive process of updating each unit.

Enhance and Extend Wireless LAN Security

Avalanche increases the security of your wireless network by enabling quick, easy updates to parameters such as SSID, WEP, EAP, LEAP and 802.1x settings—without adding new devices or infrastructure. When you use Avalanche in conjunction with Wavelink Mobile Manager (our solution for Access Point (AP) management), capabilities such as automatic rotation of WEP keys and detection of rogue APs protect your network from malicious intrusions and unauthorized equipment.

Track Your Mobile Assets

Avalanche provides real-time visibility into the status of all mobile devices under management. You can check to see which devices are up-to-date or not, or when the last time a device connected into the network. Avalanche also helps you keep track of all managed assets and even lets you export asset lists and properties to reporting applications.

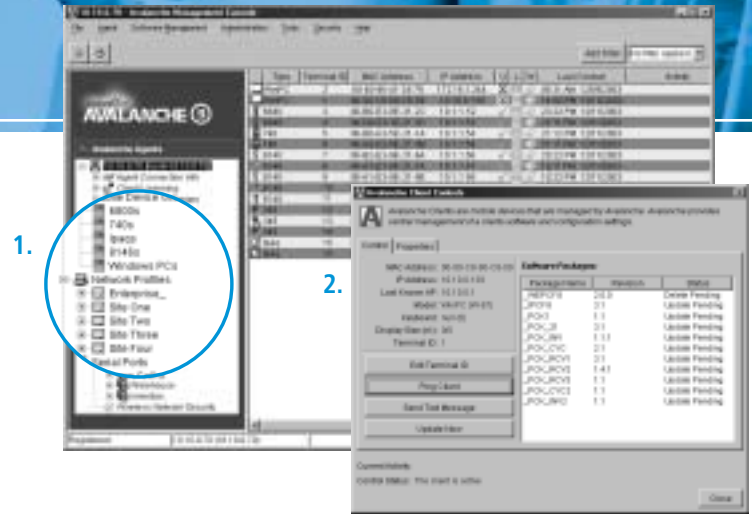
Maximize Uptime and Productivity

When it's time for updates, upgrades and other maintenance activities, Avalanche keeps mobile devices in the field where they belong. It automatically downloads new information directly to each device via the wireless network (LAN or WAN)—cradles, docking stations or serial connections can also be used for updating devices but are not required. Avalanche also minimizes downtime when a mobile device fails and you need to quickly configure and deploy a replacement, locally or at a remote site.

AVALANCHE

Avalanche provides a clear and complete view of the state of your mobile device assets. At a glance you can see all the devices under management and the last time they have been updated.

1. Access and create your software collections and network profiles from the easy-to-use tree view.
2. Get detailed information on any device, such as installed software packages, status and device parameters. Contact or "ping" a device and even send a text message to a device user.



KEY FEATURE

CAPABILITIES & BENEFITS

Centralized Management	Manage all aspects of mobile devices from a single console. Administer all functions, such as software distribution and configuring network and device parameters from Avalanche's intuitive user interface.
Flexible Software Distribution	Avalanche provides fine-grained control to create and distribute software to targeted mobile devices. Software can be easily distributed as individual or collections of applications, firmware, or files, and can be scheduled on a recurring basis or a specific date & time. Use device selection criteria such as, device manufacturer, model, OS, location or group, and others, to control the distribution of software to selected devices.
Profile Based Configuration	Define all key network and wireless security parameters to ensure that your mobile devices are properly configured to access the network. Parameters include SSID, WEP, EAP, LEAP and TCP/IP settings.
Bandwidth Management	Avalanche can schedule updates to avoid peak periods of network activity and allows you to specify the maximum number of devices to be updated simultaneously to prevent management traffic from clogging the network.
Push/Pull Mode Software Updates	Updates can be triggered either by the Avalanche Manager or by the mobile device. Push Mode allows you to schedule updates at convenient times such as off-peak hours, and Pull Mode allows for updates triggered by the device end-user as needed.
Checkpoint / Restart	Eliminate unnecessary traffic while performing software updates. Avalanche only downloads the components that have changed on the device. Also, in case a transfer is interrupted, the next time the device connects, only the remaining files will be downloaded.
Device GUI Lockdown	To minimize support costs, the administrator can control what applications to which the user has access on the mobile device. Avalanche allows you to hide the Start Menu on Windows CE devices and define a list of applications to which the user has access.
Text Messaging	Send text messages to specific mobile devices for instant communication with end-users.

Cut Costs and Boost Productivity

Many aspects of Avalanche reduce the administrative effort required to manage and support your mobile devices. Other functions help boost mobile-user productivity by enhancing network reliability. This table (left) summarizes the essential features, capabilities and benefits.

Accommodate Present and Future Devices

With Avalanche, you can handle today's mobile devices while leaving room for growth and incorporating the ability to respond quickly to unexpected changes. We support a wide range of leading and legacy mobile devices, laptops and operating systems: Symbol, Fujitsu, Intermec, HP/Compaq, PSC; Windows, Windows Pocket PC, Windows CE, PalmOS and DOS. For the most up-to-date list of supported products and system requirements please go to www.wavelink.com/wavelink/avalanche

System Requirements

Administrative Console
 Pentium III, 550 MHz
 256 MB RAM
 (512 MB RAM recommended)
 200 MB Disk Space
 Windows 2000 SP2 or greater
 Windows XP

Deployed Services (Agents)
 Pentium III, 550 MHz
 256 MB RAM
 (512 MB RAM recommended)
 200 MB Disk Space
 Windows 2000 SP2 or greater
 Windows XP

NOTE: Disk space requirements do not account for additional disk space required for specific applications and firmware that will be loaded on the mobile devices.



11332 NE 122nd Way, Suite 300 Kirkland, WA 98034 USA
 Sales and Support: 1-888-697-WAVE (9283)
 International: +1-425-823-0111 UK/EMEA: +44 1189 572 047
WWW.WAVELINK.COM