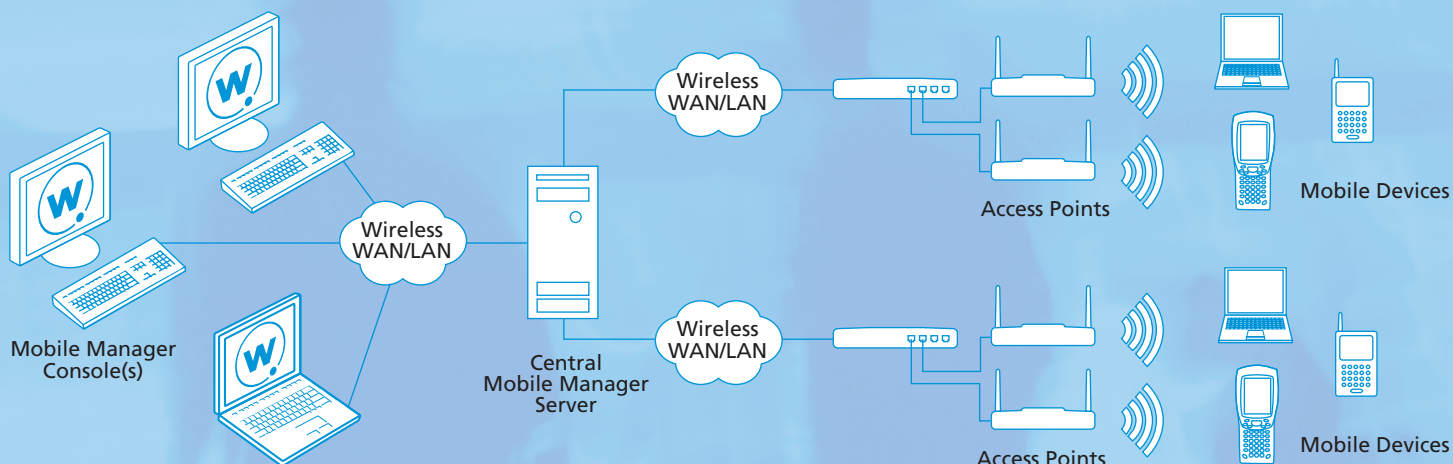


## Achieve Your Wireless Possibilities

Deploying a wireless LAN evokes two radically different responses. Users wonder how they ever lived without wireless mobility. You start wondering how to live with wireless access—because the management challenges grow exponentially as usage increases. Master the challenges with Wavelink Mobile Manager Enterprise™, proven software for centralized management of the wireless LAN lifecycle.

Mobile Manager Enterprise enhances the reliability and security of your network and the devices and applications it supports. It can even detect and fix problems on local or remote networks—before your phone starts ringing. With Mobile Manager Enterprise, you'll have better tools, and more time to achieve your wireless possibilities.



### Accelerate Planning, Configuration and Deployment

In the planning stage, Mobile Manager Enterprise increases your flexibility by letting you mix and match hardware from multiple vendors. When you're ready to roll out the network, auto-discovery and profiling functions can automatically apply configurations initially and when you add new access points (APs) and devices. The unified console lets you manage network and security settings, software and other applications for both the network and connected mobile devices—and makes it easy to add new local and remote wireless sites.

### Enhance and Enforce Wireless LAN Security

Mobile Manager Enterprise lets you set and continually enforce all network and security configurations, including SSID, WEP, EAP, LEAP, WPA and 802.1x parameters. It also detects rogue APs, protecting the network from unauthorized equipment and malicious intrusions. Capabilities such as automatic WEP key rotation help you extend network security, and enterprise-wide access control lists to further enhance your security policies.

### Improve Network Health and Performance

The intuitive interface enables visual assessments of network conditions—capacity, signal quality, most- or least-used equipment, and more—so you can respond quickly. It also lets you set specific performance thresholds that trigger alert notices to your email, pager or another monitoring system such as HP OpenView™, CA Unicenter™ or IBM Tivoli™. Even better, Mobile Manager Enterprise can proactively diagnose, troubleshoot and repair many error conditions before users notice.

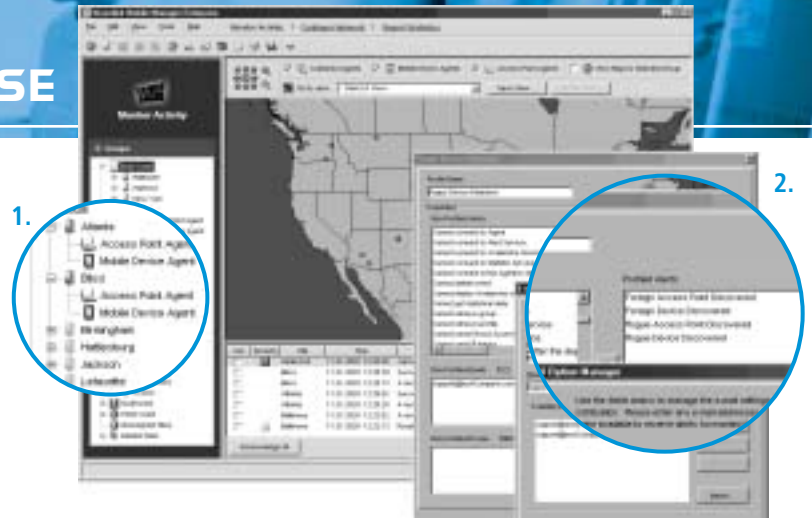
### Centralize Management of Wireless LANs and Mobile Devices

Mobile Manager Enterprise helps you automate installation and support functions for remote wireless LANs and their associated mobile devices. For example, you can define global updates for network and security configurations, firmware, applications, utilities, drivers and more. Updates can be scheduled and distributed over the air or serially to targeted network infrastructure or mobile devices.

# MOBILE MANAGER ENTERPRISE

**Mobile Manager Enterprise** provides a clear, complete view on the state of your wireless access point and mobile device assets. At a glance, the geographical map lets you identify any problem areas and provides information to the cause of the change in state.

1. Mobile Manager Enterprise's flexible architecture allows you to easily manage large, distributed wireless LANs from one central location. Define global access point and mobile device policies and distribute them quickly from the global console.
2. Define groups of alerts to which you want to be notified, such as rogue access points, and receive them automatically via e-mail or pager.



## KEY FEATURE

## CAPABILITIES & BENEFITS

### Global Enterprise View

Visualize and monitor your organization's entire wireless LAN from a central management console, including remote sites and locations. Receive timely performance alerts, events, statistics and other important network information.

### Flexible, distributed architecture

Mobile Manager Enterprise allows you to distribute the management services (agents) to remote locations, as close as possible to the devices being managed. This provides multiple benefits, including:

- Minimized management traffic and overhead across the WAN, especially important in bandwidth-limited links and high latency environments.
- Close to real-time visibility and management of your WLAN

### Profile-based configuration

Create global templates defining network and configuration settings and apply them to groups of access points and mobile devices in a few simple steps, eliminating labor intensive, repetitive tasks.

### Rogue Device Detection

Mobile Manager Enterprise monitors both the wired and wireless side of your network, providing a comprehensive method to detect rogue and foreign access points and mobile devices. If a rogue device is detected, you will be alerted with detailed information that can be acted upon, such as the rogue device's MAC address and the switch name and port number on which it communicated.

### Remote Site Deployment and Management

To better manage access points and mobile devices in remote locations, Mobile Manager Enterprise can centrally define and deploy configuration and management policies, eliminating the need for costly on-site installation, configuration and ongoing maintenance.

### Advanced Scheduler

The advanced Scheduler allows you to automate critical tasks to effectively manage a large, distributed WLAN, such as agent deployment, software package deployment and firmware distribution and updates.

### Access Rights Management

Define and control to what degree your IT staff can manage your WLAN. The User Manager allows you to define Administrative, Read/Write, Read Only privileges.

### Automatic Alert Notification

Instantly be alerted to network events. Define what network events to which you want to be alerted, such as AP down or Rogue APs, and receive alerts automatically via e-mail or pager whenever the network event occurs. Alerts can even be forwarded to other management systems, such as HP OpenView or CA Unicenter.

### Advanced Statistics & Reporting

Historical graphs of network activity can be generated based on statistical information gathered from the WLAN. Statistics such as usage activity, total number of packets, collisions or errors, can be charted to identify performance issues and trends that allow IT managers to optimize network performance.

## Cut Costs and Boost Productivity

Many aspects of Mobile Manager Enterprise reduce the administrative effort required to operate and support your network. Other functions help boost mobile-user productivity by enhancing network reliability. This table (left) summarizes the essential features, capabilities and benefits.

## Accommodate Present and Future Infrastructure

With Mobile Manager Enterprise, you can handle today's hardware while leaving room for growth and incorporating the ability to respond quickly to unexpected changes. We support the leading access points, mobile devices, laptops and operating systems: Cisco, Symbol, Proxim, Dell, HP, Avaya, Fujitsu, Intermec and PSC; Windows, Windows Pocket PC, Windows CE, PalmOS and DOS. For the most up-to-date list of supported products and system requirements please go to [www.wavelink.com/wavelink/mobilemanager](http://www.wavelink.com/wavelink/mobilemanager).

## System Requirements

### Administrative Console

Pentium III, 450 MHz  
128MB RAM  
60 MB Disk Space  
Windows 2000 SP2 or greater  
Windows XP

### Enterprise Services

Pentium III, 450 MHz  
512MB RAM  
500 MB Disk Space  
Windows 2000 SP2 or greater  
Windows XP

### Deployed Services (Agents)

Pentium III, 500 MHz  
256MB RAM \*  
500 MB hard disk space  
Windows 2000 SP2 or greater  
Windows XP

\* (plus 500KB RAM per access point managed)



11332 NE 122nd Way, Suite 300 Kirkland, WA 98034 USA  
Sales and Support: 1-888-697-WAVE (9283)

International: +1-425-823-0111 UK/EMEA: +44 1189 572 047

[WWW.WAVELINK.COM](http://WWW.WAVELINK.COM)